



ART joshua tree national park EXPOSITION



2018

SEPTEMBER 15-16

OASIS OF MARA, TWENTYNINE PALMS, CA



www.jtnparts.org



TWENTYNINE PALMS - CALIFORNIA

LODGING RESTAURANTS ATTRACTIONS EVENTS EXPLORE BLOG HISTORIC 29! PLAN YOUR TRIP



Sunrise at Heartbreak Rock. Hannah Schwalbe NPS

Visit 29!

A desert oasis at the north entrance to Joshua Tree National Park and Gateway to the Mojave.

Wide Open Spaces. Starry Night Skies. Arts & Culture. Lodging & Dining.



Visit29.org



THE TEAM

BOARD OF DIRECTORS

Brian Rennie, President
Bobby Furst, Vice-President
Meredith Plummer, Treasurer
Jerry Mattos, Secretary
Penelope Benson-Wright, Director
Chuck Caplinger, Director
Vickie Waite, Director

STAFF

Ashley Smith, Executive Assistant

STEERING COMMITTEE

Jennie Albrinck, Chief of Interpretation, Joshua Tree National Park
George Land, Community Outreach Ranger, Joshua Tree NP
Paul F. Smith, Co-owner, 29 Palms Inn
John Cole, Retired Educator, Twentynine Palms City Council
Lori Rennie, Catalog & Web Design, Benchmark Studios, Joshua Tree
Mike Congdon, Owner, Broadview Hacienda
Mark Spangenberg, Artist
Ed Keesling, Artist

PARK ADVISOR

David Smith, Superintendent, Joshua Tree National Park

OUR LOYAL SPONSORS

Joshua Tree National Park Council for the Arts
29 Palms Inn
City of Twentynine Palms
Twenty-Nine Palms Band of Mission Indians
Law Offices of Quintanilla & Associates
Public Arts Advisory Committee (PAAC)
Crossroads Café, Joshua Tree
Benchmark Studios, Joshua Tree
Bistro Twentynine, Twentynine Palms
Pioneer Rotary of Twentynine Palms
Harmony Motel, Twentynine Palms
Campbell House
Cherie Miller & Associates, Realtors, Yucca Valley
Desert Moon Pictorial
Motel 6, Twentynine Palms
Star Pharmacy, Joshua Tree
Sacred Sands B&B, Joshua Tree
The Loan Lady, Yucca Valley
Mojave Desert Land Trust, Joshua Tree
Morongo Basin Cultural Arts Council
Joshua Tree Music Festival
Country Kitchen, Joshua Tree
Frontier Cafe, Yucca Valley
Jumbo Rock Cafe, Twentynine Palms
Vagabond Welding, Yucca Valley
Ultimate Motors, Yucca Valley
El Rancho Dolores Motel, Twentynine Palms
Joshua Tree Health Foods, Joshua Tree
Joshua Tree Modern Real Estate, Joshua Tree
The Integratron

SPECIAL THANKS

29 Palms Art Gallery & Artists' Guild
29 Palms Historical Society
Gretchen Grunt, 29 Palms Creative Center & Gallery
Hannah Schwalbe, Joshua Tree National Park
Breanne Dusastre, 29 Palms Inn
Erica Roche, 29 Palms Inn

TABLE OF CONTENTS

The Team	1
Oasis of Mara	2
John W. Hilton	4
The Venues	6
Judges & Jurors 2018.....	9
Juried Artists 2018.....	10
A Few Notable Characters.....	30
Our Supporters	32

JOIN US

Joshua Tree National Park Art Exposition is a juried art exhibition and celebration of art, culture, and park history at the Oasis of Mara in Twentynine Palms, CA.

The 2018 juried art exhibition received 310 entries from 121 artists across the globe. Selected for the exhibition were 58 artists from across the desert, California, and the U.S. whose artwork depicts or is inspired by the natural beauty and/or cultural history of Joshua Tree National Park.

Join us for art and festivities at the historic Oasis of Mara for the weekend of September 15-16, 2018.

Joshua Tree National Park Council for the Arts
Post Office Box 1755 | Twentynine Palms, CA 92277
www.jtnpARTS.org



ABOVE:
Oasis of Mara,
then and now

RIGHT:
Chuck Caplinger
“Chemehuevi Basket
Weavers” at the
Oasis of Mara
oil on canvas



Oasis of Mara

by Clifford E. Trafzer

The Oasis of Mara is an eternal place, the site where the
efgcXbc_XbY@TeFfXggXWj [Xa`g XI VT` X`g`XTedf`!
4aVXagFXeeTab`aWaf`fXggXWg` X`bTfV`TaWWT`_XWg`
[b` XI`G[XI` `efg`_i XWUI` [hagaZ`TaWZTg`XeZ`ZUhg`TgXe`
g` XI`UXZTa`g`Ye` ZhfaZ`fXXW`g` XI`UTegX`XW`bebej` Xe`
ZY`Xa`UI`YeXaW`TaWex`Tgi`Xf`!

G[X` efg4` XeVaf`Tgg`X`B`TfV`bY@TeF`XaVbhefZXW`
`Xfdh`gXZV[`VZTaW` Tal`i`TeXgXf`bYVTVghf`g`Z`b`j` `a`
T[XT`g`I`TaWc`bVhVgi`X` TaaXe`EXfVWag`bYg`X`bTfV`
[hagXWUUV[`bea`f[`XXcZ` hX`WXeZ`eTUU`f`ZU`eWf`ZTaWbg`Xe`
f` T`_ZT` X!`J` g`_JaVXfZf`_aZ`fZUbj` fZ`Tebj` fZfaT`eXfZ`geTcfZ`
TaWaXgZ`g` XI` [hagXW`Ta` T`f`Ye`bbW`TaWV`bg`_aZ`!`G[X`
fheTVX`j` TgX`Tgg`X`B`TfV`bY@TeF`W`Xj` `Tal`Ta` T`f`g`
g`X`g`XXZ`_aXW`_JaWfV`cXZ`TaW`aW`Ta`cXbc_X`VT`eXh`_TaW`
dhXg[`hfXWg`X`TeX`T`be[`hagaZ`!`G[XI`T`f`b`f`g`f`egXWg`X` efg`
Ye` f`_a`g`X`Wk`Xeg`zhfaZ`g`X`j` TgX`ebYg`X`bTfV`g`_e`Z`Tg`
c`_Jag`!`A`bg`Ye`e`b` `g`X`V`X`e` baV`_Z`bhaW`Tg`g`X`%`CT`_`f`
_aaZ`g`X` efg`eXfVWag`bYg`X`bTfV`VeTgXW`T` bWkfgZ`Te`
Vka`g`Tg`Z`e`j` bi`Xe`g`X`I`X`Tef`g`c`b`i`VW`c`Xbc`X`j` g`_V`beaZ`
fdhTf[`ZUX`TafZ`TaWbg`Xe`i`XZ`Xg`U`Xf`!

FXeeTab`aWaf` efg`_i`XWTg`g`X`B`TfV`bY@TeF`!`4`WbeWaz`
g`fXeeTab`X`Vke`TaWfV[`b`Je`8eaXfgFy`TZ[`f`c`Xbc_X`UX`Xi`X`
g`XI`X`j` `g`_g`X`bTfV`Tgg`X`UXZ`aa`aZ`bYg` XZ`XfgU`_f[`_aZ`
g`X` fXi`Xf`_a`T`_hf[`Wk`Xeg`Xai`_eba` Xag`g`Tg`Tf` hV[`
WwX`eXag`g`Ta`_g`f`g`WtI`!`9`be`g`bhf`TaW`bYI`XTefZ`c`Xbc`X`
^`abj`a`Tf`FXeeTab`g`WtI` [bfgKW4` XeV`Ta`_aW`Ta`geTi`X`Xef`
j`T`_aZ`TV`b`ff`g`X`Z`eTg`Xkc`Taf`X`bY`Wk`Xeg`TaW` bhag`Taf`
bYg`X`@`b`Ti`X`7`Xf`Xeg`@`Tal`W`X`eX`_aW`Ta`g`eUXf` [TWT`

The Oasis of Mara was part of their Salt Song Trail, and the people believed it was a place of indigenous power, one of the special places of power located in this part of the world.

eX`Tgbaf[`c`j` g`_g`X`B`TfV`bY@TeF`Z`TaWg`XI`_e`X` UXe`g`V`
[bfc`g`T`U`_c`_J`VX`j` [Xe`g`XI`Xa]bi`XWg`X`V`bb`_f[`TWK`TaW`
j`Tg`Xe`g`Tg`UhUU`_XW`hc`_`eb` `UXaXTg`_g`X`XTedf`_f`fheTVX`!
Bi`Xe`g`X`Vbhef`X`bYg`bhf`TaW`bYI`XTefZ` Tal`_aW`Ta`c`Xbc`X`
Xa]bi`XWg`X`bTfV`TaWg`X`Z`Xa`Xeb`f`g`_bY`FXeeTab`c`Xbc`X`!`B`a`
g`X`e`geTi`X`f`_`eb` `g`X`CTV`VE` `XTf`g`g`Tg`TaWg`X`6`b`beTW`
EY`Xe`be`g`X`e`geTi`X`f`_`eb` `g`X`Wk`Xeg`TaW` bhag`Taf`j`Xfg`
g`_g`X`bVXTaZ`j` TI`Y`eX`f`_f`g`cc`XWUI`_g`X`B`TfV`bY@TeF`_`be`
eX`eXf[`_`Xag`Z`Vbai`XeT`g`baZ`f`baZ`Z`TaWV`X`e` bal`!

7`heaZ`_g`X`Vbhef`X`bYg`bhf`TaW`bYI`XTefZ` Tal`_aW`Xabhf`
c`Xbc_X`VT` X`g`TaWg`_ebhZ[`_g`X`B`TfV`bY@TeF`!`GeUT`_`
c`Xbc_X`^`aXj`_bYg`X`B`TfV`bY@TeF`_g`_ebhZ[`_f`baZ`fZ`Tf` Tal`
g`eUXf`_g`Tghf`XW`f`baZ`f`Tf` Tcf`_g`_XTWg`X`_f`TW`_TV`b`ff`
Z`eTg`Xkc`Taf`Xf`bY`_JaW`eb`_ba`X`f`ceaZ`_be`tinaja`_g`_g`X`aXkg`
@`Tal`_g`eUXf`_eX`VbZ`a`XW`g`X`bTfV`Tf`T`_Ye`XaW`_Z`j`_X`V`_aZ`Z`
TaWcbj`Xe`h`_c`_J`VX`_ba`X`Teg`!`G[X`j`Tg`X`e`TaW`Ta` T`f`_g`Tg`
i`f`g`XWg`X`bTfV`Tf`j`X`_Tf`_g`X`Z`eTf`Xf`TaWZ`T`eW`Ka`c`ebi`W`W`
Y`bbW`TaW`eX`eXf[`_`Xag`g`j`XTe`Wk`Xeg`geTi`X`Xef`!

F`aV`X`TaV`Xag`g`_Xf`Z`g`X`B`TfV`bY@TeF`[`Tf`_UX`Xa`c`Teg`bYg`X`
FT`_g`F`baZ`_V`b`_c`_Xk`_bY`F`bhg`Xea`CT`hg`X`c`Xbc`X`!`?`baZ`_UX`Ye`X`
6[X`X`hXi`_TaW`bg`Xe`F`bhg`Xea`CT`hg`X`c`Xbc`X`f`Xgg`XW`Tg`
g`X`bTfV`Z`g`XI`^`aXj`_g`_f`c`_J`VX`!`G[X`B`TfV`bY@TeF`j`Tf`c`Teg`
bYg`Xe`FT`_g`F`baZ`_GeT`_Z`TaWg`X`c`Xbc`X`_UX`_Xi`XW`g`j`Tf`T`
c`_J`VX`bY`aW`X`abhf`_cbj`XeZ`baX`bYg`X`f`c`XW`T`_c`_J`VX`f`bY`
cbj`Xe`_bV`Tg`W`a`_g`_f`c`Teg`bYg`X`j`_beW`

Fbhg`Xea`CT`hg`X`UX`_Xi`XW`g`X`e`6`eX`T`g`eZ`Hutsipamamau, or
B`VXTa`_J`_b`_TaZ`[`TW`eX`Tg`XW`g`X`B`TfV`bY@TeF`j`hfg`Tf`f`[`X`
[`TW`eX`Tg`XW`T`_c`_J`VX`f`_ba`X`Teg`!`J`_g`_f`_a`_`eb` ` [Xe`UbWZ`
f`[`X`[`TW`f`cea`_X`W`g`Xf`X`X`_Xag`_ba`_g`X`f`heTVX`bY`T`Z`eTg`
bVXTa`TaW`[`TW`_J`_a`_W`b`j`_a`_ba`_g`_X`f`_a`_`_b`T`g`aZ`_ba`_g`_X`bVXTa`
g`_UXZ`_a`_g`_X`c`e`b`V`X`f`_bY` T`_a`Z`_g`_X`X`Teg`!`J`_g`_ [Xe`_XZ`fZ`
Te`fZ`TaW`UbW`Z`f`[`X`ch`_X`W`hc`_`h`W`eb` `g`X`_Ub`g`b`_bYg`X`
fXT`TaW`UXZ`Ta`_`be`_aZ`_g`_X`X`Teg`!`J`_g`_ [Xe`Xkg`X`_g`Xf`Z`f`X`
`_TW`_`bhag`Taf`Zi`T`_Xi`fZ`_bc`Xf`Z`VbTf`g`Z`c`_J`g`T`h`f`Z`TaW`Ta`
_l`baF`[`X`U`ebhZ`[`g`g`X` efg`_c`_Jag`_TaW`Ta`_T`f`_ag`
UX`aZ`!`F[X`VT`_XW`g`X`V`bhW`_g`_g`X` bhag`Taf`j` [Xe`
`_b`f`g`eX`Z`T`g`XeW`_G[X` efg`eTaf`TaW`f`abj`_W`_g`_X`Teg`Z`
VeT`g`aZ`j`Tg`X`e`F[X`g`hZ`[`g`g`X` bhag`Taf`_g`_Vt`_g`X`V`bhW`
_g`_U`eaZ`j`Tg`X`e`g`_W`X`Wei`XeZ`_J`_X`f`Z`TaW`bVXTaF`!`F[X`_TW`
_j`Tg`X`ef`b`_g`Tg`_g`X`_i`_aZ`_UX`aZ`f`f`[`X`[`TW`eX`Tg`XW`b`h`_W`
_fh`e`_i`X`!`F[X`_TW`_g`X`_bhag`Taf`_f`c`XW`T`_Z`T`_g`_XI`_f`c`X`T`_g`
_g`X`V`bhW`_g`_Z`T`g`XeT`b`haW`g`X`_g`_`_be`_`_b`f`g`eX`_g`_Y`_g`
X`Teg``be`[`Xe`c`_Jag`_TaW`Ta`_T`f`!`?`Tg`X`eZ`f`[`X`g`hZ`[`g`[`h`_Taf`
[`bj`_g`_f`aZ`_TaW`f`TI`_`ceTI`XeZ`T`f`_a`aZ`_g`X`V`bhW`_g`_Z`T`g`Xe`
TaW`U`eaZ``be`g`_`_b`f`g`eX`Z`g`X`X`f`XaW`_bY`_W`!

(Excerpt from “Where Puha Sits: Salt Songs, Power, and the Oasis of Mara” by Clifford E. Trafzer and Matthew Hanks Leivas, University of California, Riverside: Rupert Costo Endowment, 2018. This is a limited edition publication created as an extension of the Salt Song Project of the Native American Land Conservancy, the Honoring Sing of Southern Paiute, Chemehuevi, and Mojave/Mohave men and women of November 2016, and the Intertribal Sing of Cahuilla, Serrano, and Southern Paiute in May 2017 at the Oasis of Mara.)



John Hilton (1904-1983)

JOHN W. HILTON

He was on his way to becoming one of the great desert landscape painters of the west . . . then he burned his paintings!

5L^C4H?F@G

Igj Tf^XTel^a^d X^ baaZ^ba^AXj^ LXTeF^8i^XI^=b[a^; \dga^ j Tf^efgXff Tf^ [X^ebT^ XWTUbhg [V^fghWb^VTexh_ fbejaZ^ [V^j be^Yeb^ g^ X^cebeI^XTe^; X^c^XW^hc^T^_bYg^ X^c^T^agaZ^f^ j [V^ [X^Vbaf^VW^eXW^ Tj^ XW^beb^g^ Xej^ fX^_TV^aZ^a^dhT^_g^ TW^be^VaZ^_d^ f^c^X^e^X^V^g^ba^f^g^f^a^V^T^e^V^!

; X^fg^f^ [XWT^_bYg^ X^fhUfg^TaW^eWc^T^agaZ^f^a^ [V^V^Te^TaW^ _Tg^e^a^g^ X^WTI^ [XTW^W^bhg^d^_5bk^6^Tal^ba^a^XTe^@^XWTZ^ 6T^_V^bea^V^!; V^Teg^fg^Uh^VW^W^f^ [X^c^XW^ [\ d^_p^Z^T^g^ X^efg^TV^f^b^Y^ V^eXW^ebaj^ bbW^_bZ^f^!^4f^ V^a^Z^ [g^Tcc^eb^TV^ [XW^g^ XI^ fg^eg^XW^ T^ [hZ^X^Uba^ e^X^TaW^W^bn^Xaf^b^Y^ Zh^e^f^ebT^ XWT^eb^haW^g^ X^ U^_maZ^ e^!^G^ [Xa^_g^j^ Tf^g^i^ X!

f; Tccl^AXj^ LXTe, V^eXW^=b[a^TaW^UTV^a^VT^ XT^V^ [behf^b^Y^ f^ [bhgaZ^ Yeb^ g^ X^f^ T^_V^ebj^ W^; X^UXZ^Ta^_d^_XXW^g^ X^ e^ j^ g^ [V^fg^TV^b^Yhaj^ beg^ l^ c^T^agaZ^f^ Yeb^ g^ X^cebeI^XTe^ ; \dga^, f^ [b^_bV^Thf^g^b^YTegj^ Tf^Ta^TaahT^_Xi^ Xag^Yeb^T^ah^ UXe^ b^YI^XTef^!^4gg^XaW^TaVX^j^ Tf^UI^ ai^ g^f^g^ba^_ba^_ TaWj^ XV^Ta^_ba^_ Z^hXff^Tg^g^ X^VW^g^Xff^_X^g^UI^ g^ XfX^c^eb^Xff^ba^T^_Teg^f^g^bi^ Xe^ g^ X^VW^f^gh^Vg^ba^b^YT^_g^ Tgj^ be^!^f; bj^ j^ Xj^ f^ [Z^ f^TW^fb^ XZ^ fg^ Tgj^ X^Vbh^_WU^hea^hc^T^_bhe^ V^g^f^X^f^b^Yg^ X^I^XTe^_X^X^ =b[a^W^b^Xf^ [V^c^T^agaZ^f^!;

=b[a^j^ Tf^Ubea^_a^\$, #^ a^A^beg^_7T^abg^!; V^ V^f^ba^T^e^c^Te^ Xag^_d^b^a^ [\ d^_6^ [a^T^!^G^ [X^I^V^ X^d^_a^bj^_6^ [a^T^Z^=Tc^TaZ^ ; Tj^ T^VZ^6^TaW^Z^@^Xk^Vb^Z^TaW^bi^ Xe^& (fg^g^k^f^!^G^ [X^I^ TW^ g^ X^e^ [b^ X^UTfX^_a^_6T^_V^bea^V^TaW^f^g^T^e^jaZ^ Tg^T^I^ bhaZ^ TZX^ =b[a^Xa^]bi^ XW^ Tal^ a^a^W^f^b^Y^]bu^f^TaW^TV^ [Xi^ XW^XTel^ fh^W^Xff^ a^g^ X^]Xj^ X_d^ Uhf^a^Xff^Z^V^he^b^f^Z^TaW^T^f^X^_Yg^hZ^ [gc^T^agaZ^ V^Te^Xe^; V^f^XafX^b^YTW^ Xag^e^X^TaW^T^f^XTe^ [Yeb^Xk^Vg^ Xag^_XW^g^ T^fh^W^Xff^h^_Uhf^a^Xff^b^Yc^eb^f^c^XVg^aZ^ TaW^ a^aZ^ b^Y^ ce^XVbh^f^Z^X^ f^d^a^Xf^!

G^ [X^VW^ce^Xff^ba^b^Yg^ X^\$, &#f^Yb^haW^=b[a^a^g^ X^VW^Xeg^b^Y^ Fbhg^ Xea^_6T^_V^bea^V^! B a^g^ X^f^VW^Z^ [X^UXVT^ X^ be^X^TaW^

^ be^X^TV^gi^ X^a^c^T^agaZ^ T^g^ bhZ^ [~ bfgj^ Xe^X^W^V^Te^W^W^5hg^ [X^a^Xj^ [bj^ d^_g^_f^g^e^Xf^Z^c^I^ g^ X^Zh^g^Te^TaW^f^a^Z^Z^TaW^ [X^ [TWT^a^TV^a^Yeb^W^V^bi^ XeaZ^j^ [Tg^ [V^Vhf^d^ Xef^j^ Tag^KW^ ; X^UXVT^ X^V^bfX^Ye^Xa^W^f^j^ g^ f^b^ X^b^Yg^ X^ a^X^c^T^ag^X^f^j^ [b^ _Y^XW^a^be^i^ V^g^X^W^g^ X^W^k^Xeg^G^ XfX^ Xa^_a^V^h^VW^WA^ Wb^f^V^ 9XV^ [aZ^@^TI^ a^TeW^7^kbaZ^; Xae^7^X^6^h^WZ^=T^ Xf^f^j^ a^a^Xeg^paZ^ 6^_VW^9^bef^ g^ X^TaW^?Xba^TeW^7^Ti^ V^!; X^_XTea^XW^eb^ g^ X^ T^_!

J [Xa^; \dga^ efg^VT^ X^d^g^ X^W^k^Xeg^ [V^c^T^agaZ^f^] Xe^ f^UTWUXI^ baWUX^_XY^, TaW^ [X^j^ Tf^ \ XafX^_Yehf^g^T^g^KW^ ; bj^ Xi^ XeZ^haW^ke^g^ X^Zh^W^TaVX^b^Y@^TI^ a^TeW^7^kbaZ^g^ X^ Tf^g^X^ c^T^ag^Xeb^Yg^ X^W^k^Xeg^a^T^_g^ bbWZ^; \dga^, f^c^T^agaZ^f^UX^ Z^Ta^_d^ c^ebi^ X^a^g^ X^ W^\$, &#f^ [V^c^T^agaZ^j^ g^ Uhf^ [Xf^ j^ Tf^i^ Xd^ Xk^TV^g^T^ bfg^d^ g^ X^cb^ag^b^YUX^aZ^c^ [bg^Z^e^f^c^ [V^ @^TI^ a^TeW^7^kba^_d^_W^ [\ f^I^ bh, e^c^T^agaZ^ Xi^ Xd^ _XTYba^g^ X^ X^fdh^g^!^G^ [ej^ Tj^ TI^ g^ X^Uhf^ [Xf^Yeb^T^I^XTe^TaW^hf^X^T^ c^T^Xg^X^a^W^fb^I^ bh^V^Ta, g^UX^fb^W^ a^ce^XV^X^!;

; XT^fb^TW^bc^g^XW^g^ X^hf^X^b^Y^T^UXXf^j^ Tk^fhUfg^TaVX^ kXW^ j^ g^ [V^c^T^ag^_d^Z^I^X^g^ X^ _hf^g^X^TaW^c^Xe^ TaXa^V^!^G^ [X^ TW^W^gi^ X^a^bj^ a^Tf^7^ be^JaW^f^@^XW^h^ [TW^UX^a^W^ki^ X^bc^XW^ Yeb^ T^fghW^_b^Yg^ X^_T^fgaZ^_dhT^_g^ b^Y^Ta^V^Xag^8Z^I^ cg^Ta^c^T^ag^ aZ^f^a^g^ X^_Cl^e^f^ W^!^J^ g^ [V^a^Xj^ Yb^haW^g^V^ [a^dh^Xf^hf^aZ^ g^ X^c^T^Xg^X^a^W^TaW^g^ X^Ta^V^Xag^8Z^I^ cg^Ta^ TW^W^gi^ X^c^Xbc^X^ fg^Teg^XW^b^ aZ^_d^_p^=b[a^Yeb^TW^VX^e^T^g^ Xe^g^ Ta^i^ WX^i^ Xef^T^! 9eb^ g^ Tg^g^ X^Yeb^ TaW^=b[a^; \dga^ VT^ X^d^_c^eb^Vh^X^i^ Xd^ Vb^_beh^_TaW^Z^e^TV^X^h^_W^k^Xeg^f^V^Xa^Xf^!; V^c^T^agaZ^f^] Xe^ab^ _baZ^Xec^ [bg^Z^e^f^c^ [V^e^X^eb^W^h^Vg^baf^Uhg^e^g^ Xef^g^eg^XW^g^_ TV^dh^e^T^ha^dh^X^TaW^f^Xaf^g^i^ X^fbh^!; V^ [b^ X^a^G^ Xa^g^ a^a^X^CT^_ f^f^abj^ UX^aZ^ e^Xf^g^e^XW^T^f^c^Teg^b^Y^T^_T^eZ^Xe^XY^beg^ d^_V^T^c^g^h^e^X^ [V^f^c^e^g^

G^ [X^%#\$^+^=bf^ [h^T^G^e^X^A^Tg^ba^T^_CTe^_4eg^8kcb^f^g^ba^ [Tf^T^ fc^XV^T^_Xk^ [U^g^Yb^Vhf^aZ^_ba^g^ X^Teg^b^Y^=b[a^; \dga^!^g^V^W^b^h^_U^_T^cc^eb^ce^Tg^f^a^VX^=b[a^Yb^ha^VW^W^g^ X^G^ Xag^ a^a^X^CT^_ f^ 4eg^f^g^; h^WTaW^: T^_Xd^!^J^ X^g^ a^a^1^bh^j^ _Xa^]bi^_g^

OASIS OF MARA

In deserts, the presence of water—that rarest of desert commodities—allows life to flourish and provides an oasis for natural and human activity. The Oasis of Mara is a cornerstone of the Joshua Tree National Park story and has been a source of life-giving water for thousands of years. The oasis was first settled by the Serrano, who called it Mara, “the place of little springs and much grass.” A line of *Washingtonia filifera* palm trees on the horizon near the oasis signaled water and shade for Serrano, and later Chemehuevi and a few Cahuilla, followed by gold prospectors and cattlemen of the 1870s, desert travelers and homesteaders of the 1900s. Desert surveyors arrived at the oasis around 1855 and found the area under cultivation by the Serrano, with corn, beans, pumpkins, and squash, all grown with the waters that rise at the oasis along the Pinto Mountain Fault. Chemehuevi settled at the oasis in 1867 and intermingled peacefully with the Serrano. Today, it is home to Joshua Tree National Park Headquarters and Oasis Visitor Center, plus several cultural venues. *(The last remaining oasis pond is at the 29 Palms Inn.)*



JOSHUA TREE NATIONAL PARK HEADQUARTERS & OASIS VISITOR CENTER

74485 National Park Drive, Twentynine Palms, CA 92277
760.367.5500 | www.nps.gov/jotr

Site of Saturday/Sunday Ranger Talks

Joshua Tree National Park receives 2.5 million visitors each year from around the globe, who come to the park for rock climbing, birding, photography, hiking the trails amid monolithic rock formations and Joshua trees, or enjoying the park’s picnic areas and 550 campsites in its nearly 800,000 acres. Ranger-led programs offer interpretive hikes and tours of Keys Ranch. Desert Institute classes include poetry, photography, art. The Oasis Visitor Center is open daily.



29 PALMS ART GALLERY

74055 Cottonwood Drive, Twentynine Palms, CA 92277
760.367.7819 | www.29palmsartgallery.com

Site of Juried Art Exhibition, Saturday Reception & Saturday/Sunday Interactive Art Workshops

The historic 29 Palms Art Gallery is owned and operated by 29 Palms Artists’ Guild, founded in 1951-52 by famed painter John Hilton and a group of desert artists. In 1963, the Guild purchased a 1930s adobe at the Oasis of Mara (former home of western pulp-fiction author Tom Hopkins), for a permanent art gallery and gift shop. Today, the gallery hosts monthly art exhibitions and receptions, art classes for youth and adults, and a variety of other special events. Regular gallery hours are 11-3 p.m. Thursday through Sunday. Open extended hours for JTNP Art Exposition. NOTE: The Juried Art Exhibition will be on display all month, September 1- 30, 2018.



29 PALMS INN

73950 Inn Avenue, Twentynine Palms, CA 92277
760.367.3505 | www.29palmsinn.com

Site of Saturday/Sunday Artist Booths, Live Music, Food and Beverages

The historic 29 Palms Inn, located at the Oasis of Mara, was established in 1928 and has been family-owned and operated for four generations. Across the 70-acre property the Inn offers an eclectic mix of guest accommodations, including historic adobe bungalows, wood frame cabins, and guest houses. Just under 2-acres in size, the on-site organic garden called Faultline Farm produces seasonal fruits & vegetables which are harvested for use in the restaurant, which is open daily for lunch, dinner and Sunday brunch. Enjoy poolside dining, a full bar, live music every night of the week, and rotating art exhibits. The 29 Palms Inn is also a popular event venue, offering on-site catering and a variety of private event spaces.



ART MARKET ON THE LAWN

September 15 & 16 at 29 Palms Inn

73950 Inn Avenue, Twentynine Palms, CA 92277
760.367.3505 | www.29palmsinn.com

Special John Hilton Exhibit, Artist Booths, Live Music, Food and Beverages
Art Market open Saturday/Sunday 10 a.m. to 4 p.m.
JT Lab Artist’s Tea Sunday 10 a.m. to 12 noon



OLD SCHOOLHOUSE MUSEUM

6760 National Park Drive, Twentynine Palms, CA 92277
760.367.2366 | www.29palmshistorical.com

Site of Saturday/Sunday Historic Art & Artifacts Exhibits

The 29 Palms Historical Society was founded in 1982. In 1992, they moved the Twentynine Palms 1920s schoolhouse to National Park Drive and remodeled it into the Old Schoolhouse Museum. The museum hosts historical displays, research library, gift shop, an Old Timers’ Gathering in October, and the annual Weed Show in November. Regular hours are 1 to 4 p.m. Wednesday through Sunday.



29 PALMS CREATIVE CENTER & GALLERY

6847 Adobe Road, Twentynine Palms, CA 92277
760.361.1805 | www.29palmscreativecenter.com

Site of Saturday/Sunday Interactive Playground Mural

The 29 Palms Creative Center offers a variety of activities for children, teens, adults, individuals and groups to experience in a multi-purpose gallery, art studio complex, workshop, and classrooms. Creative classes are offered by Gretchen Grunt. The gallery features an eclectic array of local talent, art parties, and occasional music and performance art.





THE JUDGES 2018

STEVEN L. RIEMAN - Yucca Valley, CA

FaVX\$, *, TegfGfGi Xa?!E'X' Ta[Tf`i XWtaWbcXeTgW[f'fghWb`a`LhWT1 T_Xi Z6T_\`YbeaV!; Vj be^Tf^f dhXfgbaf TUbhgG'X'UT_JaVX'UXg' XXa TW TaVaZ`gV[ab_bZl TaWg'X' cefXd Tgba`bYg' X'aTgheT`Xai`eba` Xag`@Tal`bY[Vj be^fTex`^aXgVZTvgi TgKWUl`g'X' j`aWfFaVX\$, , &[X[Tf`Vb` c_XgWg' Xag'zj` b`chU_VTegcb]XVg`a`6T`_YbeaV!

E'X' Ta`V'T`ZeTWhTgk`bY4eg6Xagk'e6b`_XZX`bY7 XfZa`a`CTfTWKaT!; X'gthZ[gTegTf`Ta` TWhaVgcbYffbeTgG'X'6bccXe@bhagT'a`6b` ` ha'g`6b`_XZX`Yb` ` \$, , &g`%##)!; X' Xa]bl f`UXaZ`T`cTegbYg'X'Zcbj`aZ`Vb` ` ha'g`bYtegf`a`g'X'VKfXegVb` ` ha'gXf`bYg'X' @bbaZb`5Tf'a`aXTe`=bf[hT`GexA`TgbaT`CTe!; XT`UbTeW` X` UXebYg'X`=bf[hT`Gex` ; Z[_JaWf`4egfGEXfWkaM` TaW[Tf`[bfgWbaX`bYg'X`=G; 4E`TegfG`XTV[1XTe`b'ed`X` cTfGga1XTef!; V`Yhea`ghe`WkfZafZj` TgkAb`bef`TaWfVh`c`gheXf`[Ti`X`UXXa`eXVbZa`rXVZ` Tj` TeXWtaWj` Wk`_Vb`XVgW'; Vj` be^f`aVhWkW@4>@hfXh` ,f`UXagj`bbWVb`_XVgba`a1`XaatZ4hfgeTzG'X`4>F` _\xi`?UeTd`ZE`XWJ`aWfZ64Z`TaWg'X`9T`ec`Xkz@`_T`eWF[XXG` : T`Xd`ZCb` baTz64!



GARY S. COLBY - La Verne, CA

4YgeT`%Zi XTeVtXe`a`gTV[aZ`TaWwXVgaZ`g'X`eXa`6Tefba` T`Xd`bYC[bGZefc[1` TgG'X`HaY`Xef'g`bY?T1`XeaXl`6b`Ul`eXgXW`a`=haX`%\$+`Tf`Cb`WffbeBYC[bGZefc[1`Z` 8` Xegh!`J`g' Ta`haVkeZeTWhTgk`WkZex`a`6b` ` haVtgbaf`Yb` `6T`Cb`_Cb` baT`TaW` T`ZeTWhTgk`WkZex`a`4egYb` `6`T`ex` bag; eTWhTgk`HaY`Xef'g`Z[Vj` be^UXZ`Ta`a`g`X`XTel` \$,`#f`Z`bVhfXW` bfgl`ba`VbVh` XagJd`TaW`_JaWVtc`X`fhU]XVg!`4g`T1`XeaXZ6b`Ul` V[T`eXW` g'X`C[bGZefc[1` 7XcTeg` XagZ`VheTgW` beX`g`Ta`\$%`Xk[`U`g`baf`a`g`X`6Tefba` T`Xd`Z` TaWf[TeXWtW`XagheX`a`g`X`VeTgYc[bGZefc[1` j` g'g` bhf`TaWf`bYgT`Xagk`WhaWke`eTWh` Tgk`TegfG!



NATHAN CARTWRIGHT - Los Angeles, CA

A Tg`Ta`6Teg` eZ[gV`T`?bf`4aZX`XfZJTFXWZ` kXW` XWf`TegfG`TaWtW`J` XWbhaWke`Vh` eTgbe`YeG'X'; i`X: T`Xd`TaWfghWb`f`f`bhaWkWa`##(f!; V`ZT`Xd`V`T`[hU`beX` XeZaZ` TaWfGjU`f[XWtegfG`Yb` `T`bhaWg'X' beVf[bj`aZ`hc`g`\$##`TegfG`T` bag`a`g`X` XW` TaWtXgheWf[bj`f!`5XaZ`g`X`b`VkfG`TegZT`Xd`a`7bj`agj`a`?4Z`\$&1`XTeF`TaWheaa`aZ`Z[X` [Tf`UXXa`XTgheXW`a`ah` X`bhf`VbVh` XagTeXf`TaW` TZTmaXf`TUbhgG'X`UhmnaZ`Vg`f`Teg` fVXaXl`4f`Ta`TegfG'X`[Tf`f[bj`a`[Vj` be^T`bhaWg'X' beVZ`TaW[Tf`UXWb` X`^abj`a`Yb` VheTgaZ`_T`eX`XfGj`T`_fg`_Xf[bj` f`T`bhaWg'X`Vbhag!

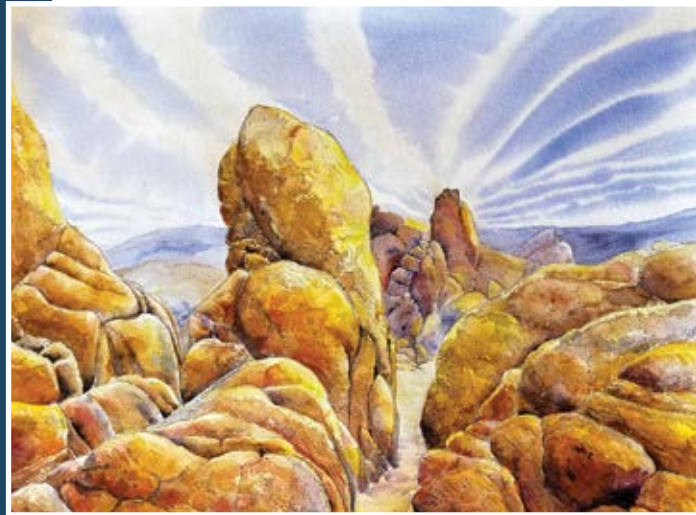


THE JURORS



Jurors for the 2018 juried exhibition met on Saturday, June 30, and reviewed 310 images of artwork submitted by 121 artists from across California, the U.S., and abroad. In the end, 58 artists and artworks were selected for the Joshua Tree National Park Art Exposition's 2018 show.

The five jurors are pictured here (left to right): Artist Bobby Furst of Furstworld, Joshua Tree; curator and artist Michael McCall of the Yucca Valley Visual & Performing Arts Center; photographer and cinematographer Casey Kiernan of Joshua Tree Workshops and Time Lapse Film Festival; artist and art instructor Penelope Benson-Wright of 29 Palms; and artist and collector Daniel Hogan of Yucca Valley.



Time To Go A Bouldering, J TgXè XWŹ\$+k%

Raini Armstrong | Joshua Tree, California

The desert is alive with thousands of fleeting moments, and Raini Armstrong enjoys attempting to capture just a handful of them to share with her friends. She has worked with watercolor for over 15 years and is drawn to the endless challenges with the medium. Subjects that inspire her are the desert with its glorious skies, brave creatures, and often hidden beauties. "I am absolutely captivated by the night sky. I will never tire of the wild forms and crooked limbs of Joshua Trees, and I love the changing colors of boulders both big and small. I am always in search of the hidden gems of Joshua Tree National Park."

Robert Arnett | Glendora, California
www.RobertArnettFineArt.com

Robert Arnett's fascination with art developed early in life when he won second place in a monster drawing contest on the Doodles Weaver Show on TV in the 1950s. Receiving an oil painting kit that Christmas sealed the deal. After college, he landed a job with a silk screen printing firm and spent the next 35 years in a career of design, print-making, and competitive creativity. Some 25 years ago he found his passion for landscape painting in the Mojave Desert art colony of Wonder Valley, where abandoned homesteads and their historic role has driven him to document their existence before the harsh environment reclaims them. Arnett is a member of California Art Club, Morongo Basin Cultural Arts Council, 29 Palms Artists' Guild, and Southern California Plein-Air Painters (socal-papa). He has studied with Clyde Semler at Otis Parsons, Daniel Greene, Joanna Arnett, Ray Roberts, Scott Christensen, Skip Whitcomb, and Michael Obermeyer.



King of the High Desert, B _ba' 6Tai TfZ\$%k\$+

Chin J. Baham | Las Vegas, Nevada
www.ArtistJenny.com

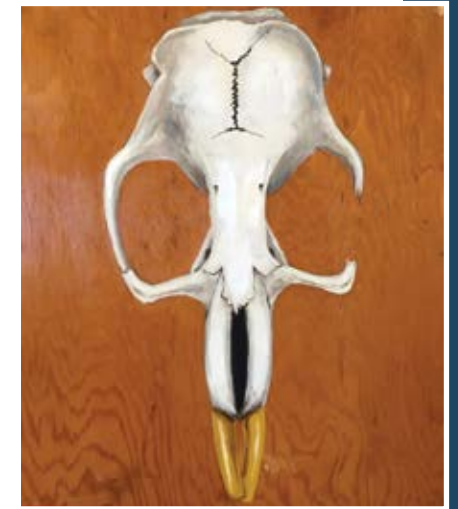
Chin J. Baham, also known as Jenny, was born in Taiwan in 1969, is married to Alvin Baham, and immigrated to the United States in 2013. She learned from Master Pang, Jiun and had several exhibitions in Taiwan and the United States. She won honorable mention for her painting in the Las Vegas International Juried Arts Competition in 2016, which included 12 countries and 9 different art categories. Her artwork "Rock and Road" was selected to be displayed by the Joshua Tree National Park Art Exposition in 2017; also in the same year, she had her solo exhibition "Promise Land" in the West Las Vegas library. As a Christian, her current project and passion is to represent the natural landscapes of the national parks across the United States showcasing God's creations through her paintings.



Taking the Road Less Traveled, B _Z%k%+

Douglas Blanc | Joshua Tree, California
www.facebook.com/no2graphics/

Since his time in the painting/drawing department at California College of Arts and Crafts in 1996, Douglas Blanc's work has followed two main threads—abstract minimalism and anatomical life drawing. When he moved to the Mojave Desert in 2016, these two threads fused in his latest series, Crania. "On weekly hikes in desert wilderness areas near my home in Joshua Tree, I find dried, sun-bleached remains of plants and animals. The bones of desert animals are the most beautiful and delicate of artifacts—they tell us stories of life and death. I cannot physically collect them since they are found in nature preserves. Instead I photograph them to have a visual reference for sketches and paintings, and then paint them on recycled plywood. Both the bones and the wood find new life. It is a way for me to collect the skulls, the spirit of fellow desert dwellers, without disturbing their remains."



Cactus Mouse, 4Vd _VZ\$+kS'

Lester Blum | New York, New York
www.lesterblumphotography.com

Since he began exploring photography 15 years ago, Lester Blum, who is primarily self-taught, has been gradually climbing the artistic ladder. While this climb is steep and often wrought with challenges, he has excelled in combining his knowledge of color, design, and balance, which was honed during his years in the fashion industry, with his photography skills. Whether he is working in black/white or color, photographing a diversity of subjects ranging from still life to portraits to travel to commercial work to artistic nudes, Blum seems to deconstruct all images into simple geometric shapes and then mentally recombine them into the frame of his camera to create a balanced image. The images are immersed in a bath of light and shadow which



Joshua Tree National Park 13, C[bqpZefc[Z\$%k\$+

further enhances his memorable photographs. Blum continues to refine his photography with new concepts and techniques for capturing his wide range of subjects.

Naomi Brown | Queen Creek, Arizona
www.naomibrownart.com

Naomi Brown was born in Palm Springs and grew up in Twentynine Palms. She now resides in Queen Creek, Arizona, with her husband and children. She has been nationally recognized, with two pieces of her work chosen for the 20th Anniversary Arts for the Parks in 2006, and 11 pieces chosen for the national competition, Paint the Parks and Paint America, from 2008-2011. She is a member of American Women Artists. She has been showcased in the online magazine Gateway to Sedona, and was featured in Southwest Art magazine, January and August 2015 issues. Her work also was featured in American Art Collector magazine, September 2015. Brown was one of the top 100 finalists for 2017 Southwest Art magazine's Artist in Excellence competition. "Once you let the desert enter your soul it changes you forever. The desert lets you feel a simplistic, raw freedom that is hard to find."



Sunrise at the Oasis of Mara, B _Z\$) k%#



A Song in the Cholla,
a^gkafX1 4Vd_Vba^J TgXAb_becTcXz\$+k%

Hannah Campbell | Joshua Tree, California
www.etsy.com/shop/HannahGraceArtStudio

Hannah Campbell is an elementary school teacher who ties art projects into just about every school subject. She was raised in Yucca Valley and lives now in Joshua Tree. She shows her artwork mainly at the Art in Public Places gallery at Twentynine Palms Visitor Center and Chamber of Commerce. Campbell loves to draw brightly colored desert pictures because, in her mind, the desert is just that beautiful. When she is not teaching, she travels the world and sketches everything she experiences with her beloved Inktense pencils. "In learning to seek the beauty in desolate places, one learns how to seek hope."

Chuck Caplinger | Twentynine Palms, California
www.desertartstudio.com

Artist Chuck Caplinger's professional career dates back to the 1960s when he was an art director contracted to NASA at Marshall Space Flight Center in Huntsville, Alabama. In the 1970s, he became known for his popular "Hollywood Faces" series and was commissioned to paint portraits of stars Sammy Davis, Jr., Sal Mineo, Rich Little, and others. In 1997, Caplinger and actress wife Holgie Forrester established Desert Art Studio in the Mojave Desert community of Twentynine Palms. His award-winning oils on canvas hang in public and private collections around the globe, and his large outdoor historical-themed murals are represented in cities throughout California and Texas. He co-founded the Morongo Basin Cultural Arts Council (Hwy 62 Art Tours); the City of Twentynine Palms' Art in Public Places program; and designed the city's iconic "29!" steel sculpture positioned at the western entrance to downtown Twentynine Palms.



Bill McHaney-Prospector in JTNP,
B_ba^6Tai TfZ' +k&#

David Clements | Yucca Valley, California
www.artbyclements.com

David Clements has always enjoyed photography and turned professional when he joined his wife as webmaster for their web business in 2000. While promoting American Saddlebreds, he became a renowned photographer of show horses, specializing in action photography and candid photos of people who exhibit and care for the horses. Clements' images were sold to an international clientele and have appeared in countless equine magazines, including many covers. In 2014, the couple moved to Yucca Valley, where he had spent many vacations in his youth. The Hi-Desert animals, flowers, and landscape drew the focus of their fine art photography, with a goal of sharing the beauty of God's nature. He is particularly interested in macro photography of the desert attractions, has won juried show awards in the area's active art community, and is a member of the Twentynine Palms Artists' Guild and Chaparral Artists.



Demanding Mate, C[bcpZeTc[Z\$) k%#

Jane Culp | Anza, California
www.janeculpart.com

Although seemingly chaotic, artist Jane Culp's life has followed a rocky path toward the Western desert lands to paint the nature of wilderness. "Living in New York City, my early work was heavily influenced by life drawing from the figure, while my studio painting was rooted in the concerns of Abstract Expressionism. In the last 30 years, these concerns for communicating painted emotional presence have morphed into capturing the totality of the land forms' felt visual experience while painting on-site in the wilderness within National and State Parks and the high desert of my home in Southern California."



Louanna's Boulders, B_ba^5bTaNZ%#k%



JT Sun Stroke, B_ba^6Tai TfZ% k' +

Kristin Czech | Morongo Valley, California

Kristin Czech was born in the Mojave Desert and grew up in the hills of Lucerne Valley—about 45 minutes from Joshua Tree National Park. She enjoys painting most when it's with her Grandmother and drawing most when it's with her daughters. "Other times it can be a bit boring," she says. "What sits upon the canvas, not merely pigment layered against primer—more than that—inspiration, poured out and tainted, its pristine face. A trace of the painter is reflected. Something has been spoken without saying a word."

Doug Dolde | Joshua Tree, California
www.DouglasDolde.com

Born in South Bend, Indiana in 1947, Doug Dolde received a BS in mathematics from Indiana University. Prior to doing photography full time, he worked as an aerospace design engineer on projects including custom aircraft interiors and rocket engines. He has been photographing the landscape of the American West since 2001, beginning with 4x5 inch transparency film, and currently a Phase One IQ180 eighty megapixel medium format digital system. His work is shown and sold at the 29 Palms Art Gallery in 29 Palms, Desert Art Center in Palm Springs, Borrego Art Institute in Borrego Springs, and JTAG in Joshua Tree, all in California. "My Impressions series are not straight photographs. They are rather digitally manipulated to produce an image that expresses how I felt when I was there.... Sometimes too much detail can be a distraction that takes you away from the overall feeling of the place."



Joshua Tree Sunset, C[bcpZeTc[Z&#k) #



Desert Smoke Trees, B \Z\$+k%

Eric Fei Guan | Walnut, California

Eric Fei Guan grew up in a family of art during China's Cultural Revolution. He painted with his mother at the peaceful painting room every day when the world outside was chaotic. His passion for painting survived the Cultural Revolution and became his devotion. Painting has become an expression of his happiness, joy, sorrow, anger, and fear.... He was later trained at the China Central Academy of Fine Arts. His oil paintings were admitted in the 2018 OPA 27th National Exhibition and the 2017 Portrait Society of America Annual Exhibition. He was awarded Third Place in the Wet Paint Competition during the 2018 OPA 27th National Exhibition. One of his portraits was awarded Best in Show at the 2018 San Marino League's Juried Fine Art Show.

Lee Edwards | Duarte, California
www.edwardsfineart.com

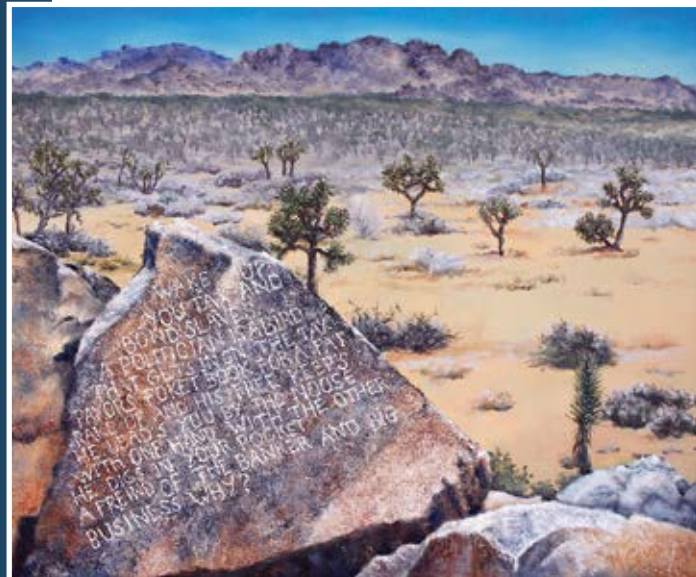
Lee Edwards, a resident of Duarte, California, is an accomplished landscape artist. Originally from California, he studied art at the University of Wisconsin and the Dayton Art Institute in Ohio. At the University of Southern California he earned an MFA degree in cinema and worked for years as a documentary editor. Since 2007, he has worked in the traditional art mediums of drawing and oil painting primarily in plein-air landscape, impressionist style. In 2008, he exhibited a one-man show of landscapes in Claremont, California. Since then his paintings have been exhibited in juried shows at the Oil Painters of America national exhibitions and the OPA Western Regional exhibitions, the Long Beach Art Museum, the Santa Paula Art Museum, the California Art Club, the Joshua Tree National Park Art Exposition juried exhibitions, and in gallery shows.



Joshua Tree Park, B _ba`6Tai TfZ%#k\$)

Marcia Geiger | Landers, California
www.geigarts.com

Marcia Geiger moved to the Joshua Tree area in 1989, and has been painting, exploring, and discovering its secrets ever since. She is a member of Palm Springs Desert Art Center, the Palm Springs Art Museum Artists' Council, 29 Palms Artists' Guild, Joshua Tree Art Gallery, and currently holds a board position in both Arts Connection (San Bernardino County Arts Council) and the Morongo Basin Cultural Arts Council. "People seek out the desert for many reasons, and it never fails to make a change in them. The same could be said for those who come out to live in this welcoming yet unforgiving climate. They are at once free to break from the rules of conformity from which they have escaped, even as they are absorbed into the very soul of the desert."



Wake Up At Samuelson's Rocks, B _ba`6Tai TfZ%#k%

Michael E. Gordon | Lakewood, California
www.Michael-Gordon.com

Michael E. Gordon is an award-winning photographic artist best known for his monochromatic images of the California desert which, says Broughton Quarterly, portray "stunning ethereal beauty from terrain where others see only a bleak landscape." A lifelong student of nature and wilderness, Gordon's intimate relationship with the natural world results in quiet images of depth and discovery. His prints are held internationally in the private collections of the United States Embassy, Kaiser Permanente, Milken Family Foundation, The Wilderness Society, and many others. His photographs have been published in and on the covers of numerous magazines, calendars, brochures, annual reports, textbooks, music CDs, and newspapers. His work has been awarded by the International Photography Awards, Prix de la Photographie Paris, and Black & White Spider Awards. His photographs have been instrumental in the campaigns of The Wilderness Society, Pew Charitable Trusts, National Parks Conservation Association, and others.



Threaded, C[bϕZεtc[Z%#k%#



Magical Universe, C[bϕZεtc[Z` #k*%`

Kai Gradert | Emeryville, California
www.photos.kaigradert.com

Kai Gradert is an international landscape and time-lapse photographer based in California. He was born and raised in the beautiful countryside of Germany. His combined background in physics, engineering and design make him uniquely qualified to combine science with creativity. After earning an engineering and design degree in Germany, Gradert relocated to the United States where he worked as a product designer with notable brands like Apple, Adobe, Intel, Lego, and Google. His love for nature and boundless beauty become unambiguous in

his photography work. Gradert's work is simple, clean, and timeless. His award-winning work has appeared on TV, in movies, commercials, and magazines, and top brands have licensed his work.

Paul Gronner | Los Angeles, California
www.paulgronner.com

Paul Gronner is a Los Angeles based photographer originally from Minnesota. Joshua Tree was immediately a place he gravitated to once he arrived in California. Many nights were spent shooting long exposures, experimenting with light painting, and being inspired by the otherworldly landscape that is Joshua Tree National Park. He currently has a show of Utah national parks at the Laemmle Theatre in North Hollywood and continues to be inspired by all of the great outdoors and national parks the world has to offer.



Fire In the Sky, C[bϕZεtc[Z\$\$\$k\$*



Baby Quail Under a Purple Tree
on a Joshua Tree Morning,
© 2018 James Hammons

James Hammons | Sugarloaf, California
www.JamesHammonsArts.com

Artist James Hammons was educated at the University of Redlands and received a graduate degree from the University of Southern California. Inspired by extensive travels and lengthy stays, studying art with indigenous peoples throughout Mexico and the jungles of Central America, and years of living and studying in Europe, Hammons' self-taught, innovative images are what he calls "Enchantism"—a mystical wonderland of color and character.

Larry Hemmerich | Palm Springs, CA
www.larryhemmerich.com

Artist Larry Hemmerich currently lives in Palm Springs, and his life and work reflect his Midwest upbringing. He recently transitioned from oil painting to pastels and, with no formal training, completed his first pastel in 2016. In pastels, he discovered a medium that

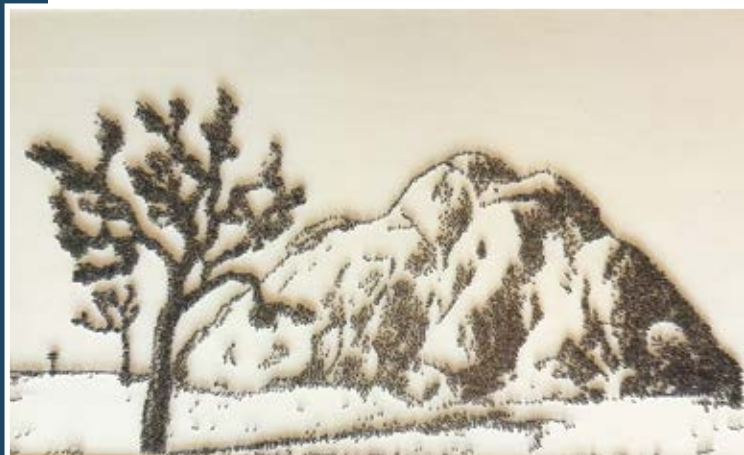
simply works for him; the rich pigments and dry blending that he was looking for. Living in the desert has provided an unlimited source of scenery and rock formations that he finds so appealing. His current works are the result of the extensive hiking he does in the Santa Rosa and Jan Jacinto Mountains, Joshua Tree National Park, and elsewhere. Hemmerich is an Associate Member of the California Art Club and the Palm Springs Artists Council. His art has been displayed at the Backstreet Art District in Palm Springs and is currently on display at D Gallery on El Paseo in Palm Desert.



Vortex Sunset, © 2018 Larry Hemmerich

John Henson | Yucca Valley
www.johnhensondesertart.com

John Henson is a self-taught artist, best known for creating desert inspired images with nails, hand pounded into wood panels. A lifelong regular visitor to the Mojave, camping in the national park to soak up its unique beauty, he eventually connected with the thriving creative scene among the hi-desert communities. After a 35-year career as a concert presenter in Los Angeles, he now focuses primarily on his nail art and assemblage projects. Henson exhibits in group and solo shows in Los Angeles and the desert region and won an exhibit award juried by MOCA Senior Curator Alma Ruiz. His work will be in the upcoming Hwy 62 Open Studio Art Tours at the visually stunning Sweet Rock Ranch in Yucca Valley. He splits his time between his desert home and Los Angeles, where his wife Deva is a music supervisor for film and television.



Winter Light, © 2018 John Henson

Terry Houseworth | Tustin, California
www.terryhouseworth.com

Terry Houseworth is best known for his memorable last name (origin unknown). Most locals know him for his captivating oil paintings. Houseworth is inspired by the simple act of painting straight from the heart, using paint to capture nature, scenery, and images that move him most, such as landscapes, trees and nature, birds, old rustic vehicles or buildings, and vintage signs. With a keen interest and plenty of practice, he learned two skills early in life: art and music. He has been a musician for nearly his entire life, with a career as a drummer. Also, he started with being self-taught and recognized for his artistic skills in high school, then to a graphic arts degree, followed by a graphics career and business, and today he is a plein-air and studio fine art painter. Houseworth's art is a combination of influences of his graphics background and a desire to paint expressively.



Wall Street Ride, © 2018 Terry Houseworth



Joshua Tree Milky Way, © 2018 Elise Hunt

Elise Hunt | Laguna Niguel, California

Elise Hunt is a self-taught artist whose largest inspiration is the beauty of nature. From a young age she was always drawing and painting. Being born and raised in British Columbia, Canada, she spent most of her childhood exploring the green forests and rugged beaches of her hometown. The colorful images of her childhood can be seen throughout her artwork. She draws inspiration from the energy of the universe and the stars above, and she captures this in her dreamy acrylic paintings. Hunt's first visit to Joshua Tree National Park sparked her passion in a way she will never forget—the rocks, the land, the nighttime sky engulfed her senses. Her artwork is currently sold to private parties and has been shown at the Festival of Arts in Laguna Beach. She now resides in Laguna Niguel, where she spends her time creating, writing, painting, and enjoying the outdoors.

Caroline PM Jones | Culver City, California
www.cpmjones.com

Caroline PM Jones journeyed into the Mojave Desert to interact with the monolithic, ancient, and immovable with her latest project "Formations." To create these strikingly organic works she spent countless hours, days, and weeks with her subjects in the Park: "Like the Formations themselves, I exposed myself to the wind, the heat, and the sounds of the desert. What stays with me is the novelty of these miraculous forms and how they have come together. The composition reflects the spatial condition of the Rocks. Like a family grown together, or breaking apart, they stand or lie in various stages of light; unified, cracked, broken, yet still proud and strong. Stones and their presence have been a preoccupation of mine since I was a child. They are a constant source of esoteric inspiration, ancestor worship, celestial notations, and distinguishing marks of journeys that represent time, seasons, and patterns of beauty."



Hanging Rock, © 2018 Caroline PM Jones



The Great Escape II - Greater Roadrunner, 4Vd \VZ\$) k%#

Kathy Kleinsteiber | San Jose, California
www.kathykleinsteiber.com

Kathy Kleinsteiber is a Northern California nature artist who left the Silicon Valley tech industry to follow her lifelong passion for creating art. She loves to explore nature and to create artwork based on what she sees along the trail. Kleinsteiber likes to portray the elements of nature that inspire her—whether they are animal, vegetable, or mineral. While art is for humans and generally depicts some aspect of the human condition, she likes to remember that life on this Earth is not all about us. She wants to communicate that we are not alone in this world and that other species call this beautiful planet home. Kleinsteiber is a signature member of the Artists for Conservation and is committed to making art that supports conservation.

Lezlie Kussin | Granada Hills, California
www.withazdesigns.com

Lezlie Kussin has been exhibiting her art in California galleries since the mid-1980s. She has her BFA in art and education from California College of Arts and Crafts and her MA in sculpture from California State University, Northridge. Besides being an artist, she is a wife, mother of two, and an art teacher to children and adults. Her works include political assemblage, installation pieces, multimedia pieces, paintings, textiles, collage, found objects, personalized watercolor/collage paintings, and pieces made from recycled objects. Her focus on texture, color, and content render her work as both whimsical and meaningful and, ultimately, provocative and fun. Kussin has lived and traveled throughout California all her life, and "California Soul" focuses on her love for her home state. Her inspiration stems from travels driving up and down the coast, visiting the beautiful beaches, farm lands, deserts, and mountains capturing, in her unique style, the soul of California.



Joshua Trees, @ \XW@XWZ&#k' #

Angel LaCanfora | Torrance, California
www.etsy.com/shop/MosaicsByLaCanfora

While Angel La Canfora began making mosaics in 2008, it was only in 2016 that she started working with stained-glass. Before, she had initially worked only with ceramic tiles and various other types of glass. She'd long admired the look of stained-glass mosaics so she decided to try her hand at it after inheriting some stained-glass sheets from her late grandmother. She loved the results so much that she now works exclusively with stained-glass. Many of her stained-glass mosaics are made for hanging in a window, while some have wood backing and are suitable for hanging on walls, indoors or outdoors. LaCanfora considers Joshua Tree National Park one of her favorite places and has visited many times over the years starting in 2010. With her mosaics, LaCanfora has endeavored to convey both the presence and whimsy of Joshua trees, as well as the striking, stark, complicated beauty of the desert.



Joshua Tree Dawn, FgT'aXW: _Jff@bftVZ\$&k\$)

Joan Lamensdorf | Pasadena, California
www.joanlamensdorf.com

Joan Lamensdorf is an award-winning artist whose paintings are inspired by the effects of light, shadow, and atmosphere on the landscape and objects around her. Her work challenges the senses as she experiments with color, texture, and light. Her expressive paintings have been featured in numerous solo and group shows and in private collections across the country. Lamensdorf is featured in Who's Who in American Art. "My art is inspired by scenes I pass every day and places I visit in my many travels. I am always moved by how light and shadow transform the colors of the landscape from one day to the next. My goal is to capture the feeling these unique moments evoke."



Late Afternoon Light, B \Z%#k\$)

Daniel Lee | Yucca Valley, California
www.danielleephotos.com

Daniel Lee was born in Palm Springs and raised in the Morongo Basin, along the northern border of Joshua Tree National Park. He combines his knowledge and fascination with technology to produce work in a variety of disciplines, including photography, digital art, and filmmaking. He uses his technical skill in post-processing to create visually engaging images.



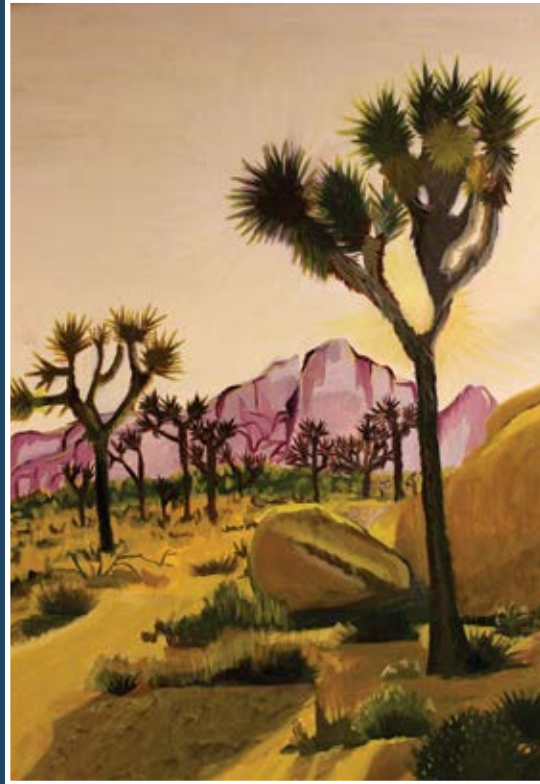
Cactus, C[bdpZefc[Z%#k&#

Alane Levinsohn | Joshua Tree, California
www.alane.fineartstudioonline.com

Alane Levinsohn attended California College of Arts and Crafts in Oakland, now California College of the Arts. Before graduation, she had the opportunity to live in Brussels, Paris, and Frankfurt and spent three years traveling through Europe. She took classes at the Académie Royale des Beaux-Arts in Brussels, and while in Paris, the Louvre was her favorite destination. Levinsohn has exhibited in juried shows, including Oil Painters of America Salon Show 2016, and won Best in Show for the 2017 JTAG drawing invitational juried show. Her work has been shown at Colliding Worlds Fine Art Gallery in Cathedral City, JTAG, Gallery 62, Saga Gallery in Montrose, Debra Huse Gallery in Laguna Beach, and Randy Higbee Gallery in Costa Mesa. She participated in Joshua Tree National Park Art Expo 2017, the Joshua Tree National Park Art Festival 2017 and 2018, and Hwy 62 Open Studio Art Tours 2016, 2017, and 2018.



Dividing Line, B \Z*k(



Anew, B _ba`6Tai TfZ&) k%

Julia Lippincott | San Diego, California
www.julialippincottart.com

Julia Lippincott lives in San Diego with her husband and two active little boys. In 2008, she earned her Bachelor of Arts from the University of San Diego, specializing in painting and drawing. She has been drawing, sketching, and painting her whole life. "I grew up in a very academic setting and usually when I was in school my head was somewhere else and my notes were filled with sketches. Whenever I failed academically, I could take all that energy and throw it into art. Art has been a great outlet for me to speak in ways that is hard for me to articulate. Finding time to create is challenging with two little ones, but I find it necessary for my mental health. Painting in particular has become a sort of meditation for me. My mind quiets and time doesn't exist. I feel refreshed and present when I am done."

Deane Locke | Yucca Valley, CA
www.dlockefineart.com

Growing up, Deane Locke dreamed of becoming an artist. As with many people, opportunity didn't present itself until recent years, when finally she has time and opportunity to pursue her passion for painting. "I take

great pleasure working with watercolors and pastels. I utilize my camera to photograph everything that I find interesting, strange, and beautiful. My subject preferences seem to lean toward old barns and buildings, blooms and birds." Locke's formal art education includes classes with several artists in the San Diego area, and upon relocating to Yucca Valley, she has had the pleasure of taking classes from artists Elsie Grace, Audrey Gillick, and David Musser. "Each teach with unique techniques, which helps me explore so many different styles and approaches to my paintings." Locke is a current member of the Chaparral Artists, Desert Art Center, and Watercolor West.



Bladder Bush Flowers, J TgXAb bZ\$&k\$#

Lisa Manifold | Twentynine Palms, California
www.lisa-manifold.pixels.com

Framed photographs of Lisa Manifold and her six siblings in 1960s style outfits, hairdos and pointedly colorful eye glasses were prominently displayed in her childhood home. The happy memories the photographs evoked, coupled with her newfound love of grandchildren, drove her to purchase a digital camera in 2015. "Little did I know just how much that camera would change my life. One photo after another, click after click after click; college, seminars, and months on end of photographing, downloading, and posting prompted me to retire to see the world full time through a Nikon lens, or two or three. What I see and experience through the camera is captured in the photos shared through LM Manifold Photography on Facebook, Instagram (Manifoldlm) and my website."



Bad Hare Day, C[bphZeTc[Z\$#k\$#

Terrence Mayes | Yucca Valley, California

Photographer Terrence Mayes worked for Marine Corps Community Services in Twentynine Palms, California, for 16 years before retiring in 2016. A 1972 graduate of Brooks Institute of Photography with a major in Industrial and a minor in Color photography, he has worked as a corporate, advertising, and freelance photographer. His black and white photographs of Joshua Tree National Park first graced the renovated walls of the Sleepy Tortoise Lodge TLF aboard the Marine Corps base in Twentynine Palms, illustrating to patrons the beauty of the desert surroundings. Other base facilities now have these photos, including the Education Center and the Officers Club. "My work with MCCC was 35mm digital. My personal work is film using Hasselblad and Cambo Wide 4X5. I scan my film with an Epson 850V and use Adobe Photoshop and NIK software on a MAC computer."



Mojave Sun Halo, C[bphZeTc[z@XgT_Ceag%#k&#

Kathy Miller | Joshua Tree, California
www.kathymillerphotography.smugmug.com

Kathy Miller has been a resident of Southern California for 23 years. She has been a successful portrait photographer since 2004. As a desert lover, Miller moved to Joshua Tree in 2017. The Mojave Desert and Joshua Tree National Park are primary influences of her creative art works. Her non-traditional landscape photography prints are at Gallery 62 in Joshua Tree and at the Morongo Valley Art Colony, where she was a featured artist. With her landscape photographs, she manipulates and inverts images into magical and dreamy illusions. She exhibited her acrylic landscapes at the Oasis of Mara Visitor Center during the Joshua Tree National Park Art Festival. Her hand-painted JT Night Dream trinket boxes are available at Mojave Sol in Twentynine Palms, and she will be in the Hwy 62 Open Studio Art Tours 2018, where she will have landscape paintings, digital art, and 3D mixed media fiber arts.



*Joshua Tree Rain, C[bphZeTc[Z\$#k\$#**

Marilyn McFarlin | Joshua Tree, California
www.marilyn-lantz.pixels.com

When Marilyn McFarlin was young, she had her fortune read by a seaside fortune teller "for kicks." As the fortune teller peered down at the lines on her palm, she told her two things. First, the boyfriend she had at the time would NOT be the love of her life. Second, she would have to wait 30 years to find her passion. "Almost 30 years to the day, my husband got me a camera for Christmas. Since then, I have not looked back, and I remember that prophecy with a chuckle. Shooting nature, for me, is akin to a spiritual experience. I particularly love starry skies—the silence, the expanse, the feeling of being one with the universe. Nature speaks to me: desert landscapes, sunrises, sunsets, hummingbirds, and beautiful cactus flowers. I've found myself in heaven, living so close to Joshua Tree National Park, and I have found my passion."



Beauty and the Storm, 7 VZgT_4eZ\$%k\$#+



The Traveller, C[bḡZētc[z@Xgī_Cēagz% k&)

Mitch Miller | Joshua Tree, California
www.fineearthphotography.com

Photographer Mitch Miller's visual journey began at age 6, marveling at a window reflection of shadows and silhouettes. By age 16, his Polaroid Big Swinger camera rarely left his hands on a six-week trip home to California. Miller has been photographing the mountains and deserts of the southwest since 1981. "I first ventured into Joshua Tree National Monument, Memorial Day, 1980, and although unimpressed by the heat and flat light, I continued to return in more beautiful light, and weather. I fell in love with the monument so much I returned each year for my birthday throughout the 1980s, and married my wife Kathy there in 1999." Miller has received awards, has presented slideshows for REI and Sierra Club, and has displayed his artwork at the Yucca Valley Visual & Performing Arts Center inaugural exhibition 2018 and at Art in Healing, Hi-Desert Medical Center, Joshua Tree, and Desert Art Festival, Palm Springs, 2018.

Robert Miramontes | Desert Hot Springs, California

Robert Miramontes has been a permanent resident of Southern California since birth, and has spent nearly his entire life exploring, rock climbing, and photographing Joshua Tree National Park. He has authored seven books on the subject of Joshua Tree National Park. His extensive collection of Joshua Tree National Park photography spans over 25 years, chronicling a near fanatical obsession with the place. Miramontes' photography can be seen in books and magazines distributed world-wide.



Beautiful Moment, C[bḡZētc[z@Xgī_Cēagz% k&)

Chip Morton | Menifee, California
www.chipmortonphotography.com

Early on, photographer Chip Morton studied and refined his ability to "read the light," including direction and quality, and to set exposures without a light meter. For him, like so many of the great photographers, "light is truly his paintbrush." After college, he dedicated his career to mastering all areas of photography, including professional film processing and camera equipment during the 1980s and establishing a successful studio specializing in fashion and commercial advertising photography in the 1990s. He has been the official photographer for the prestigious Temecula Valley Balloon and Wine Festival for years, has been featured in several art galleries, and provides landscape photography for several Southern California municipalities. "I was first drawn to Joshua Tree National Park by the

light. Or the shadows, I don't really know. I just loved the quiet beauty of the bouldering landscape and the magic of being in the presence of these centuries-old living monuments."



Rugged Beauty, C[bḡZētc[Z%#k&)

Brandon O'Neill | North Hollywood, California
www.brandanon.com

Brandon O'Neill is a self-taught photographer and artist who showcases his work with an eye of awe and care for the natural world around us. With a willingness to brave the harshest terrain, O'Neill aims to share his corner of the Earth with all—especially those not fortunate enough to have access to such varied and beautiful environments. A native of rural Pennsylvania, his first exposure to the desert was during a cross-country road trip from coast to coast. The shock of such frighteningly unknown terrain soon turned to wonder and appreciation for what America's land has to offer. With a sharp eye on composition, he often returns to the desert to recenter and reinvigorate his passion for life, photography, and protecting the wild spaces which feed both the spirit and creativity of so many.



Chasing Light, C[bḡZētc[ba'4_h' ah` Z\$) k%

picture, and the constant change of these relationships over time. Each photo is an absolute personal experience of reality."

Karchi Perlmann | Los Angeles, California
www.karchip.com

Born in Budapest, Hungary, Karchi Perlmann is a veteran photographer and independent filmmaker. He has been shooting commissioned and fine art work for over 25 years. He settled in Los Angeles in the late 1990s. The sundry energy of Southern California became the focus of his work in the past several years. Among his series are "My Backyard," a lyrical depiction of Venice Beach during the "closing hours"; "Another Planet," a contemplative and surreal interpretation of Joshua Tree; and "Together/Discombobulated," an abstract cubist exploration of harmony within chaos rendered through primal convention of multiple exposure. His images appeared in Architectural Digest, Time, Home and Garden, Gulfshore Life American Photography, and various other publications. He is also an award winning filmmaker, receiving honors from such festivals as the Venice Film Festival, Palm Springs Film Festival, Brooklyn Film Festival, and many others. Perlmann currently resides and works in Los Angeles.



Fellowship, C[bḡZētc[Z\$) k%#

Miroslav Peric | Sherman Oaks, California
www.gentleshadow.com

Miroslav Peric is a part-time resident of Joshua Tree, part-time photographer, and full-time wanderer. Born in Yugoslavia, graduate of University of Belgrade, he studied Civil Engineering and History of Art. Over time, he worked as civil engineer, architectural designer, street salesman, graphic designer, and photographer. He received his first camera (an old Altix IV) from his father at age 14. He has participated in over 400 photo exhibitions and had 13 solo exhibitions (first one in Nikon Gallery in Vienna, Austria; last one in Joshua Tree Inn). "Photography, for me, is an ability (given as a natural talent or acquired through consistent practice) to see things around us, not only to look at. To see relationships between objects, the delicate play of light and shadow, the importance of discrete detail in the overall



Pyramid, C[bḡZētc[Z% k&\$



Restful Day, 4Vd_V\ba^C_IfgkeEX_XVZ+k%&

Elisabeth Pollnow | Twentynine Palms, California
www.elisabethpollnow.com

Elisabeth Pollnow's most recent work reflects a connection to the land around her whether sculpting local plant life or rock formations. Growing up in remote areas of North Dakota and Alaska has given her a deep sense of connection to nature. Now, living near Joshua Tree National Park, she has new materials to work with including adobe clay and reclaimed wood. She is best known for her sculptural work and also for her paintings on eucalyptus bark. She

earned a BA in fine arts in Missouri and has collaborated with several large-scale projects in Los Angeles as well as exhibited in Pasadena and San Fernando. She is a member of the Morongo Basin Cultural Arts Council, 29 Palms Art Gallery, and Gallery 62. "The finished product is the ashes of the creative process and I love to set things on fire!"

Kevin Powell | Joshua Tree, California
www.powellimages.com

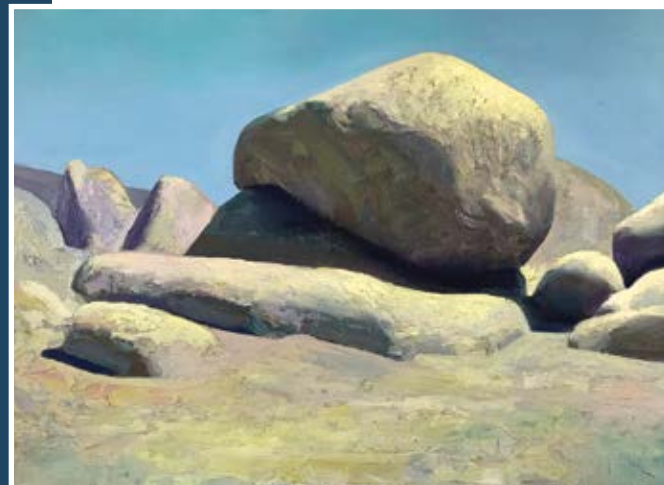
The natural world has been the object of his artistic desires since Kevin Powell first picked up a camera 30 years ago, motivating him to create images based on simple, clean compositions that depict the natural world just as it is—natural and raw. He has visited Joshua Tree National Park for 45 years and been a full time resident for 24 years. "During this time, the Park has always been an alluring, creative environment in which to photograph the natural world. From the classic early morning sunrise, to the fleeting glimpse of the elusive bighorn sheep, to the spring carpet of colorful wildflowers, to the granitic oddity of the jumbled masses of rock, the Park constantly invites my presence." Photos representative of his work appear in a hiking guide that he recently wrote on Joshua Tree National Park.



Ryan Ranch, C[bϕZεfc[`ba`oTai TfZ\$(k\$#

Dallas Rayburn | Yucca Valley, California
www.dallasrayburn.net

As a child growing up in Southern California, Dallas Rayburn was never far from his sketchbook. He spent the majority of his time in the desert drawing surreal landscapes, eerie creatures, and distorted portraits, primarily in graphite and occasionally in charcoal. His love for the unusual and bizarre never left him. After graduating high school, he decided to turn his passion into his profession. Since then Rayburn has been traveling all around the United States while painting and drawing odd and dark images full time.



Hidden Valley, B_VZ\$%k\$)

Alana Rios | Oakland, California
www.alanarios.com

Alana Rios was born in Providence, Rhode Island, and attended Bennington College in Vermont where she studied photography and printmaking. In 2008, she moved to Oakland, CA where she sought out the darkest skies in the California wilderness to create images that document how we move through time and space. Her early work included social documentary and autobiographical portraits that investigated our changing notion of family. She combined drawings with family photographs to expose the underpinnings of how mark-making can reveal our own desire to leave something behind. Currently she is pursuing her MFA in Photography at San Jose State University where her long exposure photographs describe a symbiosis between prehistoric rituals and modern artifice. She has two ongoing night photography series. "Leave No Trace" improvises fantastical discovery in uninhabited lands. "The Backyard Project" overlays anecdotal stories about femininity within a domestic context of the natural world.



Episode 18, 7_V\gt_a^)\XgCeagYb` `\$\$#`9\ `Z\$) k\$)

Mark Robben | Rancho Palos Verdes, California
www.skylightphoto.net

Mark Robben is a 22-year resident of Southern California, by way of southwestern Ohio where he first began his lifelong love of outdoor photography. From Pacific Ocean vistas to the wide open desert, Robben tries to capture the beauty of solitude in his landscape images. In recent years he has focused on capturing the beautiful night skies over Joshua Tree National Park, featuring many of the less traditional areas and rock formations as his foreground subjects. When not wandering the park in search of his next composition, he works as a Visual Effects Artist in feature films, commercials, episodic television, and the occasional music video for various post-production facilities in the Los Angeles area. He lives in Rancho Palos Verdes, CA.



Stargazer, C[bϕZεfc[Z% k\$'

W. Jason Situ | El Monte, California
www.jasonsitufineart.com

W. Jason Situ was born in 1949 in Guang Dong, China. He began painting in high school during China's Cultural Revolution and completed his art education at the Guangzhou Fine Arts Institute, one of China's most prestigious and competitive art academies. In 1989, Mr. Situ immigrated to the United States with his family. He was fascinated by the beautiful California landscape and soon decided to become a plein-air painter. He has been a full-time artist since 1997 and has shown his work across the United States, receiving numerous awards in prestigious juried art competitions. He is a signature member of the California Art Club, the Laguna Beach Plein Air Painters Association, Oil Painters of America, Rocky Mountain Plein Air Painters, and an honorary member of the Tucson Plein Air Painters Society. He also has been featured in several fine art publications including Art of the West, Southwest Art, and American Artist.



Morning Light, B_VZ\$) k%#



Stormy Desert, B 12x18, oil on canvas

Jeffrey Skelly | Sunland, California
www.jeffskellyart.com

Southern California artist Jeff Skelly graduated from Cal State Northridge in 1989 and continued his studies at California Art Institute and UCLA. With over 20 years of experience and widely collected on three continents, Skelly has exhibited in numerous venues such as the Palm Springs Art Museum, the National Arts Club in New York, and many juried shows. Awards include a First Place at Yosemite Renaissance XXVIII juried competition and the Superintendent's Award at the Joshua Tree National Park Art Exhibition in 2015. "As a child, some of my most memorable experiences were on summer camping trips to the Sierras. The vast landscapes, towering peaks, and stunning beauty left lasting impressions. Over time I learned how to merge that love of Nature with my desire to create. With the use of bold brushwork and unique color harmonies, my paintings are not only faithful representations of places I've been but spiritual impressions as well."

Jim Smart | Joshua Tree, California
www.jimsmartphotography.com

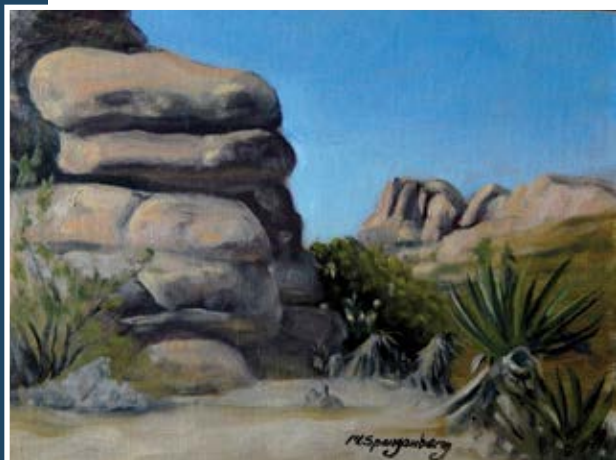
Jim Smart developed an interest in photography more than 50 years ago when he took a high school course and made a pinhole camera, and shot with a Speed Graflex. Since then he has used Leicas, Hasselblads, Mamiya, and Canon equipment, and owned or used most of the Canon cameras made since the 1970s. He now uses film cameras exclusively. He has been selected as an artist in residence in the Mojave National Preserve and has had several shows in Southern California. Smart lives a few miles from the west entrance to the Joshua Tree National Park.



JTNP Boulders and Shimmering Light, 5J 9x12, C [bfpZetC] Z\$(k\$%

Mark Spangenberg | Twentynine Palms, California
www.markspangenbergfineart.com

Artist Mark Spangenberg was born and raised in Twentynine Palms in the Mojave Desert. Known as a contemporary realist, he received formal education at Art Center College of Design in 1985 with a BA in Illustration. During that time, he worked at the Getty Museum in Malibu, conserving and cleaning Greek terra cotta figures as old as 2000 BC. In 1980, he enrolled in a fresco painting class in Salzburg, Austria, taught by master fresco painter Robert Scherer from Bolzano, Italy, who introduced him to painting into fresh plaster (true fresco). Spangenberg has assisted with fresco painter Benjamin Long IV and Charles Kapsner and over the years has continued portrait, mural, historical, landscape commissions, and art instruction. He has taught at the Sawtooth School of Visual Art in Winston-Salem, Wesleyan Academy, the Art Alliance in Greensboro, N.C., and privately. He is currently involved with promotion of the arts in the Morongo Basin.



Big Mac Rock, B 12x18, oil on canvas

Kathleen Strukoff | San Juan Capistrano, California
www.kathleenstrukoff.com

Capturing the essence of a scene (alla prima) on location in one quick and energetic session, artist Kathleen Strukoff uses a combination of palette knife and vigorous brushwork with bold colors to express her translation of the scene. She is known for her brilliant colors and capturing the light, whether it is an urban scene or a landscape. Her love for painting landscapes began as a young girl growing up in New Mexico where she first started painting in the beautiful environment of northern New Mexico. She was moved by the spectacular vistas and colors that you see in nature on a daily basis in the high desert. In recent years, she has become obsessed with the spirit and challenge of plein-air painting. She has exhibited with SOCALPAPA and Laguna Plein Air Painters, and in galleries including La Chica Gallery, Arts Factory Las Vegas; Just Modern, Palm Springs; and Forest & Ocean Gallery, Laguna Beach.



The Road to Somewhere, B 12x18, oil on canvas

Weslie Thien | Twentynine Palms, California

After studying photography in high school, Weslie Thien attended Rocky Mountain School of Photography, graduating in the summer of 2000, and subsequently had a short few years in college studying photography and art history. "When 9/11 happened, I knew it was time to put that part of my life on hold, and I joined the Marines. Since 2002, I have traveled all over for the Marine Corps and never gave up on my passion for photography. I would only take pictures here and there to show my family. It was my wife, kids, and family that finally convinced me to start putting myself out there and for my work to be seen. The main reason why I love photography is being able to take that moment in time and allowing others to view the world I see."



Map to Neverland, C [bfpZetC] Z+k\$%

Donna Todd | Valley Glen, California
www.donnatoddphotography.com

Donna Todd is a professional photographer based in Los Angeles. Her intuitive artistic abilities have won more than 100 major international photographic awards, and her photographs have been published in books, magazines, and exhibitions. She grew up in Australia, worked on newspapers and in portraiture. Now she focuses on photographing nature and social issues, in particular people from primitive places practicing Animist belief systems and poverty. She has worked in more than 20 countries, including USA, Australia, Guatemala, Mexico, Mongolia, India, Papua New Guinea, Thailand, Nepal, Tibet, Cambodia, Vietnam, and Indonesia. "To be on photo safari always chasing light and trying to extract the extraordinary from the ordinary is Nirvana." Her work in this show is part of her series on America's National Parks, an epic journey across the continent to photograph the sacredness of the national parks.



Purple Haze, C [bfpZetC] Z&#k' #



Guardian under the Stars, © Marjorie Trandem

Marjorie Trandem | Yucca Valley, California
www.marjoriemandem.smugmug.com

Marjorie Trandem received her first camera at age 8 as a gift from her father. "He always had a camera with him. I have taken photos all my life and have been told by many that I have an 'eye' or natural ability to compose. After my father passed away six years ago, I bought my first real good camera. I went on a six-week road trip across the US and my passion for photography was born." Since then, Trandem has committed to traveling and seeing all the places in the world that she dreamed of and is slowly checking off the bucket list. Improving her technical skills and gear over the years, she simply tries capturing moments in nature, wildlife, and travel as the opportunities present themselves. "Night photography is a new passion, and I am excited about the creativity in lighting that can be expressed under the stars and night skies."

Travis Usher | Yucca Valley, California

Travis Usher is a lifelong resident of the high desert and surrounding communities. Along with his wife and two daughters, he currently calls the outskirts of Joshua Tree National Park home. He started his journey at age nine studying pastel chalks with a local artist, who guided him to first showing his work locally at the Hi-Desert Playhouse. An art teacher later introduced him to an array of mediums where he fell in love with painting in oils. Working as a professional artist the last two years, he has mainly focused on commissioned portraits and murals. Mostly he works on paintings and murals with a focus on narrative, figurative, and portrait work, while continuously being inspired by the harsh yet beautiful landscape of the Mojave Desert that surrounds him. Usher had his work featured in the Joshua Tree National Park Art Exposition 2017 and the 26th annual Joshua Tree National Park Art Festival 2018.



Monolith, © Travis Usher

Brice Weaver | Lakeside, California
www.briceweaverphotography.com

Brice Weaver is a San Diego based fine art photographer focused on sharing his passion for exploration and nature conservation through art. Weaver started to photograph his adventures in 2015 and since then has been published in Backpacker Magazine as well as featured in many juried art exhibits including Raw Artist "Futures" San Diego, Raw Artist "Verve" San Diego, Raw Artist "Motif" Brooklyn, Gallery 21 42nd Small Image Show, Honorable Mention at the 11th Annual Colorado Environmental Film Festival, 2017 Joshua Tree National Park Art Exhibition, Gallery 21 43rd Small Image Show, and Studio Altius "Seen 11". His vision is to set new standards for modern landscape photography.



Tequila Sunrise, © Brice Weaver

Tami Wood | Morongo Valley, California
www.tamiwoodcreations.com

Tami Wood started assemblage and painting in 2005, when she moved from Palm Springs to the High Desert of Morongo Valley to find a more tranquil side of life. She is eclectic. She gathers things in the desert that speak to her about our environment and lets the objects inspire her as she creates her fun, thoughtful, and sometimes quirky work. She uses weathered wood, vintage window frames, rusty tin cans, old utensils, bolts, screws, metal, paper, wire, gauges, and tree branches to create her work. Nothing is off limits. Most of her work is assembled on reclaimed wood. She has participated in the Hwy 62 Open Studio Art Tours since 2009. In 2017, Wood won the Commissioner Choice Award from the City of Palm Springs for her work "Serenity" in their annual juried art show.



Big Moon, © Tami Wood

a Few Notable Characters



Twentynine Palms early residents enjoyed many picnics in what is now Joshua Tree National Park. The caption on this historic photograph reads: "Circa 1936-37--Bagley Picnic in Indian Cove. Pictured are Stan Krushat, John Bagley, Ben Steeg, Art Krushat, Ethyl Olsen, George Michels, Al Curry, Maude Martin, Betty Michels, Helen Bagley, Florence Curry, Bess Flickinger, Jimmy McCullom, Tom Martin, Frank Bagley, Herb Tower, Heine Olsen, Ray Flickinger, Rick Cain, Edith Mildred Michels, Alma Steeg, Olive Krushat, Sara Krushat, Dona Tower, and Chuck Martin." (Photo by Lester Krushat. FULL STORY on page 30)



STAR PHARMACY

*Lowest Prescription Prices
in the Hi-Desert*

760.366.3653
6448 Hallee Road, #2
Joshua Tree, CA 92252



Monday-Friday | 9 am - 6 pm
Saturday | 9 am - 3 pm

The Joshua Tree National Park Gateway Community Cities
Favorite Real Estate Magazine



desertmoon
pictorial
REAL ESTATE magazine

Featuring Real Estate and the Local Animal Shelters and Non-profit Rescues




*Where People and
Companion Animals
Find a Home!*




Distributed throughout the Morongo Basin and the
Coachella Valley and in the MCAGCC Guide!
You can also download our magazine at:
www.DesertmoonPictorial.com

*Published by Desertmoon Arts Graphic and Design
Bruce and Claudia Hamilton 760-363-6587*



INTEGRATRON




**JOSHUA TREE
HEALTH FOODS**

YOUR
*informed mind
healthy body*
CONNECTION



760.366.7489
Open 7 Days
Sun-Fri 9-6
Sat 8-6
jthealthfoods@gmail.com
61693 29 Palms Hwy, JT
www.joshuatreehealthfoods.com



Vagabond
Serving the Hi-Desert for 30 Years

WELDING SUPPLY & STEEL

760-365-3070 Toll Free **888-882-4226**

55870 Yucca Trail, Yucca Valley CA 92284



joshua tree modern

Bryan Wynwood
Broker/Owner
760-808-4806

61762 29-Palms Highway
Joshua Tree, CA 92252
bryan@jtmmodern.com



**PIONEER ROTARY
of
Twentynine Palms**

Proud supporter
of the community
and all its people
and activities.

P.O. Box 241, 29 Palms, CA 92277
Stop by our booth at the Art Expo entrance!

THE LOAN LADY Residential • Commercial • Land



LOANS

Purchasing
Refinancing
Equity Loas
Hard Money

760.365.7003

Apply Online Today!

Local Real Estate Sales

Cherie
CHERIE MILLER & ASSOCIATES

For All Your Real Estate Needs!

55857 29 Palms Highway
Yucca Valley, CA 92284
www.CherieMiller.com
Ph: 760-369-1800

Pioneertown Realty 55857 29 Palms Highway
Yucca Valley, CA 92284
www.PioneertownRealty.com
Ph: 760-369-1800

Morongo Valley Realty 49730 29 Palms Highway
Morongo Valley, CA 92256
www.MorongoValleyRealty.com
Ph: 760-363-6800

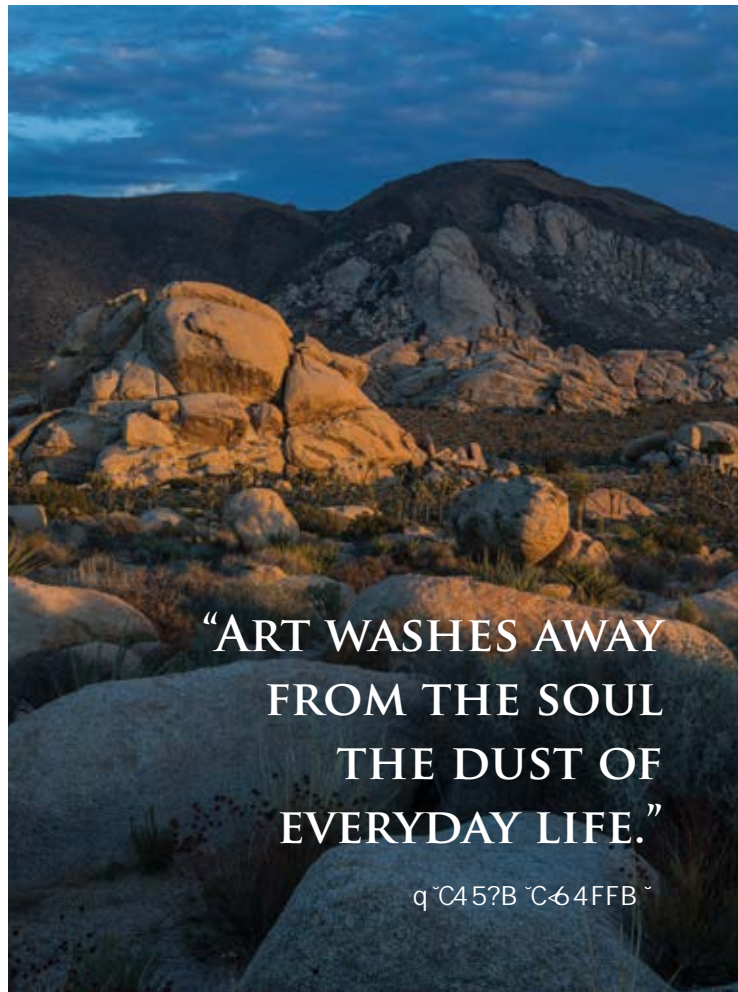
Joshua Tree Realty 61325 29 Palms Highway, Suite C
Joshua Tree, CA 92252
www.JoshuaTreeRealty.info
Ph: 760-366-7600

29 Palms Realty 74017 29 Palms Highway, Suite C
Twentynine Palms, CA 92277
www.29PalmsRealty.com
Ph: 760-361-2900

Serving the High Desert Neighborhoods
of Yucca Valley, Joshua Tree, Twentynine Palms,
Pioneertown, and Morongo Valley



 DRE#01005011 



“ART WASHES AWAY
FROM THE SOUL
THE DUST OF
EVERYDAY LIFE.”

q C45?B C-64FFB ~



ULTIMATE MOTORS

PROFESSIONAL TRUCK & AUTO REPAIR
HONESTY. INTEGRITY. SERVICE.

FOR ESTIMATES CALL: Adam & Deanna Spitz, Owners
760.228.1040




The only AAA approved repair facility
AAA members get additional warranty & discounts.

SMOGS | BRAKE REPAIR | STEERING/SUSPENSION
30 60 90K SERVICES | AIR CONDITIONING




56816 Twentynine Palms Hwy, Yucca Valley, CA 92284



QA

LAW OFFICES OF QUINTANILLA & ASSOCIATES
proud sponsors of
JOSHUA TREE NATIONAL PARK ART EXPOSITION 2018



“Art is the most creative expression of American freedom.”

Steven B. Quintanilla
President

ATTORNEYS
Steven B. Quintanilla | Robert J. Lee | Jennifer A. Mizrahi
Joseph A. Meeks | Colin D. Kirkpatrick | Tuan-Anh D. Vu
Lisa S. Weaver | Grace Garner

ADMINISTRATIVE STAFF
Monica Mata & Michael Cook

LAW OFFICES OF QUINTANILLA & ASSOCIATES
P.O. BOX 176, RANCHO MIRAGE 92270 | 760-883-1848 | WWW.QALAWYERS.COM



Mojave Desert Land Trust protects the Mojave Desert ecosystem and its scenic and cultural resource values.

We are the Voice of the Mojave.
Will you listen?



Find out how at MDLT.org



JOSHUA TREE

MUSIC FESTIVAL

OCT 4-7

2018

MAY & OCTOBER EACH YEAR

Creativity begins here

ADS | BROCHURES | LOGOS
WEBSITE DESIGN & DEVELOPMENT
VIDEO PRODUCTION

LOCAL CLIENTS INCLUDE:

JOSHUA TREE NATIONAL PARK COUNCIL FOR THE ARTS www.JTNParts.org
CITY OF 29 PALMS TOURISM www.visit29.org
29 PALMS ART GALLERY www.29palmsartgallery.org
MORONGO BASIN AMBULANCE www.mbambulance.org
MOJAVE WIFI www.MojaveWiFi.com

BENCHMARK
STUDIOS



PO BOX 980
64085 QUAIL SPRINGS RD
JOSHUA TREE, CA 92252

WWW.BENCHMARKSTUDIOS.COM

714.630.7965

ASK FOR

Lori Rennie

THE COUNTRY KITCHEN

"best darn food in town"

760.366.8988 JTCOUNTRYKITCHEN.COM
61768 TWENTYNINE PALMS, JOSHUA TREE, CA 92252

BISTRO
twentynine
A CASUAL SOUTHERN BISTRO

760.910.9524

Great Food! Great Service! Great Place!

FISH. CHICKEN. STEAK...with a southern touch!

73527 29 Palms Hwy, Twentynine Palms, CA 92277
www.bistro29palms.com

RESTAURANTS

support our local sponsors

GELDINIZ ТАВТАЙ МОРИЛОГТУН SELAMAT DATANG
AT DATANG SHALOM *Yōkoso* BIENV
WILLKOMMEN *Bem Vinda*
M ТАВТАЙ МОРИЛОГТУН **BENVENUTO**
Fàanying **KIA ORA** VÄLKOMMEN
IBU *Aloha* Welkom SELAMAT DATANG HUĀNYING HOŞ
da **WELCOME** *Yōk*
om **BIENVENIDO** *Shagatom*
ALOHA *Selamat Datang* TABТАЙ МО
SVAGAT HAIN *Velkommen*
ORA HOŞGELDINIZ SHALOM
kommen **KARIBU** *Kia Ora*



HWY 62
open
studio
**ART
TOURS**

PURCHASE ART DIRECTLY FROM ARTISTS
WWW.HWY62ARTTOURS.ORG

Save the Date

151 Artists - Two Weekends
October 13-14 & 20-21
2018 // 17TH ANNUAL

Art & Nature...

IN THE GATEWAY CITIES OF
Joshua Tree National Park



BREAKFAST LUNCH DINNER
ESPRESSO CAPPUCCINO TEA

MON-SAT:
6am - 9 pm *proudly serving
Joshua Tree Coffee*

SUNDAY:
7am - 8pm

73777 TWENTYNINE PALMS HWY | 29 PALMS, CA 92277 | 760.361.2420

FRONTIER

BREAKFAST • LUNCH • COFFEE & TEA • BEER & WINE

OPEN DAILY 7AM-7PM
55844 TWENTYNINE PALMS HWY • YUCCA VALLEY, CA 92284
760.820.1360 • INFO@CAFEFONTIER.COM

CROSSROADS CAFE

JOSHUA TREE ★ CALIFORNIA

BREAKFAST • LUNCH • DINNER
BEER AND WINE

OPEN 7 DAYS • 7AM-9PM
61715 29 PALMS HIGHWAY AT PARK BLVD.



CAMPBELL HOUSE

Historic Inn of Twentynine Palms



STAY • RELAX • EXPLORE



Join us in Twentynine Palms, where we celebrate the arts, culture, and history of Joshua Tree National Park all year long. Minutes from the north entrance of Joshua Tree National Park, we invite you to experience one of California's most spectacular landscapes and discover how it inspires you.

74744 Joe Davis Drive, 29 Palms, CA • (760)367-3238 • CampbellHouse29Palms.com

6
 motel

- > 125 Guest Rooms
- > Pool with Hot Tub
- > Pets are FREE
- > Convenient Location

72562 Twentynine Palms Hwy
 Twentynine Palms, Ca 92277
 760-904-6992
 www.motel6.com

Sacred Sands
 Joshua Tree Guest Retreat
 Luxury B&B
 www.sacredsands.com
 63155 Quail Springs Road, Joshua Tree, CA
 760-424-6407

One mile from the national park's west entrance.
 Your hosts: Steve Pratt & Scott Cutler

ARIS
 JOSHUA TREE NATIONAL PARK
 COUNCIL FOR THE ARTS

YOUR AD HERE
...NEXT YEAR!

El Rancho Dolores
MOTEL

Walk to downtown
 Near Joshua Tree National Park
 Largest pool in town | Free Wi-Fi | AC | HBO flat-screen TV
 www.elranchomotel29palms.com **760.367.3528**

DESERT AUTHENTICITY

LODGING

2018 PREMIUM SERVICE

support our local lodging sponsors

www.HarmonyMotel.com

only 1 mile from
 49 Palms Oasis
 1 of 5 oasis in
 Joshua Tree
 National Park

71161 29 Palms Hwy.
 Twentynine Palms, CA 92277
760.367.3351

21st Annual
Theresa A. Mike
Fashion Show



**SATURDAY
JUNE 16, 2018**

Congratulation to NALC!

The County of San Bernardino Board of Supervisors approved the conveyance of Coyote Hole to the Native American Land Conservancy. A 30 plus acre property near Joshua Tree National Park with Native American pictographs and petroglyphs, a culturally rich site, will now be protected and preserved for generations to come.



Native American Land Conservancy

TWENTY-NINE PALMS BAND OF MISSION INDIANS



DECEMBER 7TH THRU 9TH



Twenty-Nine Palms Band of Mission Indians



73826 Baseline Road | Twentynine Palms, CA 92277
www.tortoiserockcasino.com

46-200 Harrison Place | Coachella, CA 92236
www.spotlight29casino.com



Native American and Conservancy
California Non-Profit Organization
ID 33-0832220
P.O. Box 3074, Indio, CA 92202



Please visit us online at
www.theresamike.org
ID# 45-4613889



29 PALMS INN

*A proud supporter of the arts, culture,
and history of Joshua Tree National Park*



Fine Food & Lodging on the historic Oasis of Mara

Adobe Bungalows & Wood Frame Cabins, Restaurant & Organic Garden, Set on a Natural Desert Oasis

73950 Inn Ave • Twentynine Palms • California • 760.367.3505



29PalmsInn.com



Celebrate. Art.

*"Imagination is the beginning
of creation.*

*You imagine what you desire,
you will what you imagine,
and at last,
you create what you will."*

~ GEORGE BERNARD SHAW

