



WHITNEY GARDNER, OCOTILLO SKY



ART joshua tree national park
EXPOSITION

2020

NOVEMBER 1-29

29 PALMS ART GALLERY AT THE OASIS OF MARA



DISCOVER Arts & Culture

 **29 Palms**
DISCOVER Arts & Culture

Plan your visit to 29 Palms and discover the beauty of the California desert that has inspired artists for generations. Discover world-class murals and public art installations, vibrant art galleries, and a monthly Art Cruise 29!

www.Visit29.org

ART joshua tree national park EXPOSITION



Joshua Tree National Park Art Exposition is a juried art exhibition and celebration of art, culture, and park history at the Oasis of Mara in Twentynine Palms, CA. The 2020 juried exhibition Call for Art received 228 pieces of art submitted by 96 artists from the desert region and across California and the United States. After the jurying process, 61 artists were selected for the juried exhibition, which features artwork depicting or inspired by the natural aspects or cultural history of Joshua Tree National Park. The exhibition is on display with works for sale at the historic 29 Palms Art Gallery from November 1 to 29, 2020, and is featured on the website www.jtnpARTS.org. The Art Expo is presented by Joshua Tree National Park Council for the Arts in partnership with the 29 Palms Artists' Guild, both 501(c)(3) non-profit organizations based in Twentynine Palms, California.

JTNP COUNCIL FOR THE ARTS BOARD OF DIRECTORS

Beverly Waszak Krushat, President
Bobby Furst, Vice-President
Meredith Plummer, Treasurer
Jerry Mattos, Secretary
Jim Bagley, Director
Jennifer Carter, Director
John Cole, Director
Mike Congdon, Director
Vickie Waite, Director

STEERING COMMITTEE & ADVISORS

Ian Chadwick, Joshua Tree National Park
Heidi Grunt, Owner, 29 Palms Inn
Ed Keesling, Artist, MBCAC and 29 Palms Art Gallery
Lori Rennie, Graphics/Web Design, Benchmark Studios, Joshua Tree
Erica Roche, Catering Manager, 29 Palms Inn
Mark Spangenberg, Artist, Vice-President, 29 Palms Artists' Guild
PARK ADVISOR
David Smith, Superintendent, Joshua Tree National Park

SPONSORS & PARTNERS

Joshua Tree National Park Council for the Arts
29 Palms Artists' Guild & 29 Palms Art Gallery
City of Twentynine Palms & Public Arts Advisory Committee
Law Offices of Quintanilla & Associates
Pioneer Rotary of Twentynine Palms
Historic Inns of Twentynine Palms
Benchmark Studios, Joshua Tree

SPECIAL THANKS

29 Palms Artists' Guild Board of Directors & Volunteers
29 Palms Historical Society
Gretchen Grunt, 29 Palms Creative Center & Gallery
Breanne Dusastre, Tourism Director, Visit 29 Palms
Hannah Schwalbe, Emily Hassell, Joshua Tree National Park

Juried Exhibition at 29 Palms Art Gallery

Nov. 1–29, 2020 (Open Thurs.–Sun. 11–3)

Art Expo weekend | Art Demonstrations

Saturday & Sunday, Nov. 7 & 8, 10 a.m. to 4 p.m.
at the gallery and Oasis of Mara venues

Awards Evening

Saturday, Nov. 7, 5 to 7 p.m. at the gallery

JURIED EXHIBITION CATALOG

Cultural Venues at the Oasis of Mara
and Brief History of
Joshua Tree National Park

4–5

Juried Exhibition 2020
Artists and Artworks

6–26

Jurors & Award Judges

26

CATALOG CREDITS

Catalog Design/Layout: Vickie Waite, JTNP Council for the Arts
Cover Design: Lori Rennie, Benchmark Studios, Joshua Tree
Front Cover Artwork: *Ocotillo Sky* by Whitney Gardner, Oil, 24x30, winner of Best of Show 2019
Back Cover Artwork: *Ohlson Ruins*, JTNP, by Marcia Geiger, Oil on Canvas, 30x48, 1st Place 2-Dimensional Art Category, 2019.
Upload by Mitch Miller, Photograph, 45x30, 1st Place Photography Category, 2019.
Praeservare by Valerie Messervy Birkhoff, Clay Sculpture, 17x14x12, 1st Place 3-Dimensional Art Category, 2019.

Joshua Tree National Park Council for the Arts

Post Office Box 1755

Twentynine Palms, CA 92277

Email: artoffice@jtnparts.org

www.jtnparts.org

www.29palmsartgallery.com

Oasis of Mara — Twentynine Palms, CA

In deserts, the presence of water—that rarest of desert commodities—allows life to flourish and provides an oasis for nature and human activity. The **Oasis of Mara** is a cornerstone of the **Joshua Tree National Park** story and has been a source of life-giving water for thousands of years. A line of *Washingtonia filifera* palm trees on the horizon near the oasis signaled water and shade to all early travelers who crossed the Mojave Desert. Geologic surveys have measured evidence of water in the oasis area dating back 9,000 years. This was surely important for the Pinto Man, whose archaeological remains were discovered within the park boundaries by Twentynine Palms homesteaders William and Elizabeth Campbell back in the 1920s-30s. The oasis also was home to early Native Americans and was first settled by the Serrano, who called it Mara, “the place of little springs and much grass.” They were joined later by the Chemehuevi, who settled at the oasis and intermingled peacefully with the Serrano. A few Cahuilla also were known to be at the oasis, although mostly they settled in the low desert. Desert surveyor Col. Henry Washington arrived at the oasis in 1855, followed by A.P. Green, and they found the area under cultivation by the Serrano, with corn, beans, pumpkins, and squash, all grown with the waters that rise at the oasis along the Pinto Mountain Fault. The Native Americans were followed by gold prospectors of the 1870s, cattlemen and cattle rustlers, desert explorers, miners and homesteaders of the early 1900s, and veterans who came to heal their war-damaged lungs after World War I and built a permanent community. Today, the Oasis of Mara is home to Joshua Tree National Park Headquarters and Oasis Visitor Center, plus several cultural venues, including the 29 Palms Art Gallery, 29 Palms Creative Center, 29 Palms Historical Society’s Old Schoolhouse Museum, and the 29 Palms Inn.



The last remaining oasis pond is at the 29 Palms Inn.

Brief History: President Franklin D. Roosevelt recognized the beauty of this desert region of Southern California in 1936 when he created Joshua Tree National Monument, thanks to the efforts of desert plant protector Minerva Hamilton Hoyt and photographer Stephen H. Willard. The monument was proclaimed a national park by President Bill Clinton in 1994. But for 9,000 years, Native Americans had lived amid its monolithic rocks and strange Joshua trees. Serrano and Chemehuevi found a home at its Oasis of Mara, whose fan palms eventually gave Twentynine Palms its name. Cattleman Bill McHaney arrived in 1879, learned of gold ore deposits from the native people, and began an influx of prospectors seeking fortunes. In the 1920s, Dr. James B. Luckie of Pasadena discovered that the clean air and warm, dry climate helped veterans with respiratory illnesses, and they homesteaded parcels of 160 acres. Artists, writers, actors, and musicians later discovered Twentynine Palms, and in the 1990s a renaissance in the arts began to flourish, spawning art studios, galleries, music recording studios, events and festivals, public art installations and world-class murals that adorn the gateway to Joshua Tree National Park and continue to this day.

Joshua Tree National Park receives 3+ million visitors each year from around the globe—people who come to the park for rock climbing, bouldering, birding, hiking, camping, photographing or painting the monolithic rock formations and Joshua trees, or enjoying the park’s picnic areas and 550 campsites in its nearly 800,000 acres, which encompass two distinct desert ecosystems, the Mojave and the Colorado deserts. Ranger-led programs offer interpretive hikes, tours of Desert Queen (Keys) Ranch, weekend ranger talks, and more. www.nps.gov/jotr

Joshua Tree National Park Headquarters & Oasis Visitor Center

74485 National Park Drive, Twentynine Palms, CA 92277
(760) 367-5500 • www.nps.gov/jotr • www.joshuatree.org

Joshua Tree National Park’s Oasis Visitor Center is open daily, operated by the Joshua Tree National Park Association. The visitor center features interpretive displays, maps, guide books, desert books, CDs, gifts, souvenir T-shirts, tote bags, water bottles, and more. Ask about Desert Institute classes that offer poetry, photography, art, and desert survival courses.

Site of Oasis of Mara trailhead and Saturday/Sunday Interpretive Walks & Talks.

Joshua Tree Visitor Center

6554 Park Blvd., Joshua Tree, CA 92252
(760) 367-5500 • www.nps.gov/jotr • www.joshuatree.org



The park’s visitor center in Joshua Tree is on the road to the west entrance of the park. It’s open daily and features an exhibit room and large gift shop with desert books, guides, maps, souvenirs, gifts, T-shirts, tote bags, water bottles, and more. Next door is a cafe with sandwiches and other take-out food available for picnics or overnight stays in the park.

Cultural Venues at the Oasis of Mara



29 Palms Art Gallery & Gift Shop

74055 Cottonwood Drive, Twentynine Palms, CA 92277
(760) 367-7819 • www.29palmsartgallery.com

The historic 29 Palms Art Gallery is owned and operated by 29 Palms Artists' Guild, founded in 1951-52 by a group of desert artists including famed painter John Hilton. In 1963, the Guild purchased the 1936 adobe at the Oasis of Mara (former home of western pulp-fiction author Tom Hopkins), for a permanent art gallery and gift shop. Today, the gallery hosts monthly art shows and receptions September to June, with a summer show open weekends July and August, selling artwork in three main gallery rooms. There is also a gift shop on the premises, and the Guild

hosts seasonal events and art classes for youth and adults at the gallery and online. Regular hours are 11–3 Thursday through Sunday. Open extended hours for JTNP Art Exposition celebration weekend: Saturday & Sunday, Nov. 7 & 8, 10 a.m. to 4 p.m. The Art Expo awards ceremony and informal hospitality will take place on the gallery patio from 5 to 7 p.m. on Saturday, Nov. 7.

Site of Juried Art Exhibition Nov. 1–29 | Art Demonstrations Nov. 7 & 8 (10 a.m. to 4 p.m.) | Saturday Evening Awards, Nov. 7 (5 to 7 p.m.)



29 Palms Creative Center & Gallery

6847 Adobe Road, Twentynine Palms, CA 92277
(760) 361-3461 • www.29palmsart.com

The 29 Palms Creative Center offers a variety of activities in a Covid-compliant facility that is open by appointment at the west end of the Oasis of Mara. Activities include classes and private instruction for kids and adults and curbside pickup for Art Kits to-go. Artist-owner Gretchen Grunt specializes in art education for children, teens, adults, individuals and groups to experience in her multi-purpose gallery, art studio complex, and workshop classrooms. Creative activities include Pottery Painting, Clay Classes, Neon Black Light Canvas Painting, Mixed Media Marathon,

Adult Encaustic Painting, Adult Wood Burning “Pyrography” Class, Monotype Printing with a Griffin Etching Press, and more. The Creative Center features artwork for sale by various local desert artists in the upstairs gallery, as well as art activities for the whole family and instruction by appointment. Email: 29palmscreativecenter@gmail.com

Site of art activities, Saturday, Nov. 7 and weekends through November.



Old Schoolhouse Museum & Gift Shop

6760 National Park Drive, Twentynine Palms, CA 92277
(760) 367-2366 • www.29palmshistorical.com

The 29 Palms Historical Society was founded in 1982. In 1992, the board of directors and dedicated volunteers moved the 1920s Twentynine Palms schoolhouse to National Park Drive near the Oasis of Mara and remodeled it into the Old Schoolhouse Museum. The building has continued to grow since then, adding a research room, archival storage room, and most recently a large community conference building. The Old Schoolhouse Museum has desert historical displays, a research library, a charming gift shop with everything from books and gifts to purple glass, and it hosts an

Old Timers' Gathering in October, the annual Weed Show in November, and Second Friday Lectures from September to June with Desert Institute at Joshua Tree National Park. Regular hours are 1 to 4 p.m. Wed.–Sun. In this time of Covid-19, the gift shop is open for business although the museum portion is still awaiting guidelines that will allow it to open. However, the **Weed Show** will go on!—an annual tradition for more than seven decades, it's a judged show of artistic compositions using dried desert plant material and found objects. Face masks and social distancing will be required, with limited entry to reduce overcrowding.

Site of the annual “Weed Show”—Saturday, Nov. 7 (12–4 p.m.) and Sunday, Nov. 8 (10 a.m.–4 p.m.)

Juried Artists 2020



Cholla Spring, Oil on Canvas Panel, 20x24

Robert Arnett | Glendora, California

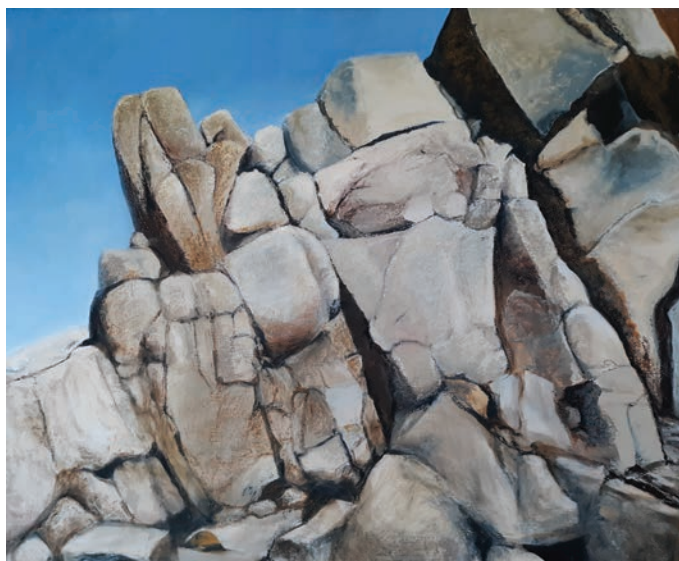
Plein-air artist Robert Arnett's fascination with art developed at age 10 when he won 2nd place in a monster drawing contest on the Doodles Weaver's Show on TV in the 1950s. Receiving an oil painting kit that Christmas sealed the deal. He landed his first job with a silk screen printing firm and spent the next 35 years in a career of design, printmaking, and competitive creativity. Some 25 years ago he found his niche in landscape painting and has made a name for himself in the Mojave Desert art colony of Wonder Valley, where abandoned homesteads and their historic role has driven him to document their existence before the harsh environment reclaims them. A native Californian, Arnett studied at Otis Art Institute, Scottsdale Artist School, and is a member of the California Art Club, the Southern California Plein-Air Painters, 29 Palms Artists' Guild, and Morongo Basin Cultural Arts Council, and is an annual participant in the Hwy 62 Art Tours. www.RobertArnettFineArt.com

Jenny Baham | Las Vegas, Nevada

Jenny Baham was born in Taiwan in 1969, is married to Alvin Baham, and immigrated to the United States in 2013. She learned from Master Pang, Jiun and has had solo and group exhibitions. She won Honorable Mention for her painting in the Las Vegas International Juried Arts Competition in 2016, which included 12 countries and 9 different art categories, and three of her paintings have been selected for the Joshua Tree National Park Art Expo from 2017 to 2019. She has been teaching art to educate the next generation since 2014, in College of Southern Nevada, Nevada Arts Academy, and now in Art2Art District Las Vegas, and she curated an art show for her students every year to help grow the art atmosphere in the community. She also had a solo exhibition at West Sahara Library in 2020 called "Promised Land" and has won several Certificates of Special Congressional Recognition. <http://artistjenny.com>



Hello Halo Joshua Tree, Oil on Canvas, 18x24



Leaning Left, Oil on Canvas, 36x44

Judith Bair | Sinks Grove, West Virginia

Judith Bair made her first trip to Joshua Tree in 2015. The impact of this unique desert, especially the rock formations, the monumental hills of stone, the stories captured in sun and shadow, was immediate and inspiring. A growing body of work in oils, both on canvas and paper, is based on the images and sensations captured during that and subsequent visits. "The natural world has been my guide and teacher for almost 80 years. These boulders, so patiently and brilliantly accepting the harshness of wind, temperature and time, relentlessly defaulting to desert sand, give me a long view of my place in the order of things." Bair's work has received numerous awards and has been shown extensively in group and solo shows on the east coast from Baltimore, Maryland, to West Virginia. artworkarchive.com/artwork/judith-bair

Juried Artists 2020



Morning Offering, Acrylic on Canvas, 24x30

Craig Barnes | Yucca Valley, California

From art to music to art again, Craig Barnes' life has taken him down two artistic paths. Yet painting landscapes is what drives his artistic passion. In a sea of oil painters, Barnes chooses to use acrylic paints in a realistic style to achieve his ideas. While his paintings are realistic in nature, using acrylics rather than oil paints allows him to capture the emotion of the landscape without the painting becoming overly photorealistic. Building layer upon layer, he will painstakingly work until the desired effect is attained ... a realistic landscape, full of interesting detail, couched in a moment of admiration and wonder. "I want my art to be interesting and detailed, but I don't want it to lose the emotion, I don't want it to look like photography. I want the piece to provoke an emotional stirring, that magical something that touches a person deep inside when they take in a stunning landscape. Like the feeling one gets, the first time they experience giant rocks in Joshua Tree National Park." Qrstudio@msn.com

Brandin Barón | San Francisco, California

Brandin Barón is a San Francisco-based visual artist. After receiving his M.F.A from the University of California, San Diego, he has worked professionally as a fine and digital artist, graphic designer, and costume designer for theatrical productions, and design scholar. From 2006-2018, he was a Professor of Design at the University of California, Santa Cruz. The submitted images are from a series of work entitled "I Wanna B a Cowboy" (2018-20), that draws inspiration from the past artists associated with American Western landscape and portraiture. Compositions within this series are "staged" through the process of layering original photographic and hand-rendered imagery with stock photography and digital textures; final output includes combinations of mixed media, including drawing, painting, printmaking, sculpture, and assemblage. Barón's work has been featured in solo exhibitions and has been selected for nationally-juried group exhibitions across the United States.

www.brandinbaron.com



2D – *Joshua Tree III*, Framed Silkscreen on Parchment with Acrylic, Ink, Chalk Pastel, and Enamel, Print 3/3 – 14x17

3D – *Ex Voto (Our Lady of the Scorpions)*, Framed Assemblage on Wood Panel with Cut Paper, Metal Figurines, Nails, Silver Leaf, Ink, Gouache, Oil Crayon, and Enamel, Version 1/3 – 10x12x2

Juried Artists 2020



B.E. Baxter | Palm Desert, California

Bart Baxter is best known for his five books of poetry and many awards. He studied Art at Boise State University and holds a BA from the University of Texas. For the last 11 years he has lived in Mumbai, Addis Ababa, and London. Returning to his home in the Coachella Valley, he found a forgotten grace. His pencil drawings express the pacific joy of wandering in the high desert: the secret structures, the quiescence of shapes, and the settlement of stone, no less elegant than David in Florence or a soaring cathedral in Rouen. He understands there is a time for tumult and a time to urge things to move. There is also a time to be still and exult in the absence of motion. In Joshua Tree National Park, he says, "... I admire the way boulders cling to one another in patterns, complex and irregular. I garner a sense of solace in their timeless vignettes, and I find distinct peace in their presence. Drawing their shapes is a meditation."

bartbaxter@msn.com

Ozymandias, Pencil on Paper, 30x22-1/2

Valerie Birkhoff | Grass Valley, California

Valerie Messervy Birkhoff graduated from Portland State University with a B.S. in Arts and Letters. Her work includes clay sculpture, hand-sewn beaded-wire sculptures, oil/acrylic painting, and mixed media. She has received numerous awards such as Best of Show at the Sacramento Fine Arts Center and other awards there as well, including an Award of Excellence for an oil painting and Third Place for a clay sculpture. She was included in the 30th Annual Clay Competition in Davis, California, in 2019, and she has been juried into the Joshua Tree National Park Art Exposition since 2014, receiving a Second Place Award in 2015 for her beaded sculpture "Ouch!" and First Place in 2019 for her clay piece "Praeservare." This year, she says, "I've been thinking about interactions—the relationships of animals and humans.... Knowing that the natural world continues as it has been is comforting during a time when human reality has shifted so much." www.valsworth.com

Encroachment, Beaded Sculpture, 30h x 24w x 12d



Transcendence in Solitude, Oil on Canvas, 20x20

Stephanie Britt | Bellingham, Washington

Stephanie Britt's interest in abstract art began while studying painting, color and design at Ringling College of Art and Design with Professor Bruce Gregory, a student of famed French cubist Fernand Leger. This introduction opened the door to further interest and study of other influential artists and movements of the time including Braque, Mondrian, Cezanne, Cubism, and Futurism. Although different stylistically, later studies with contemporary figurative artist Zhaoming Wu and noted portrait artist Daniel Greene further influenced Britt's work. Inspired by the work of certain early 20th century artists and a lifelong fascination with sequential art, her work conveys an impression of a constantly shifting pictorial environment while maintaining a recognizable subject; consequently, her work is best described as Abstract Realism. After residing for many years on the Hawaiian island of Kauai, she currently makes her home in Washington, a state of endless inspiration, with her husband and two demanding felines. www.sbrittfineart.com

Juried Artists 2020



Naomi Brown | Queen Creek, Arizona

Naomi Brown was born in Palm Springs, California, and grew up in Twentynine Palms. She now resides in Queen Creek, Arizona, with her husband and children. She has been nationally recognized in competitions. Her work is in private collections and some of her work has toured the United States. She is a self-taught artist and has been painting for the past 16 years. Her subjects vary from Southwest, Native American scenes to vast Arizona and California desert landscapes, and her paintings have been featured in *Southwest Art* and *American Art Collector* magazines. She mainly paints with acrylic and oil on wood and museum board, sometimes using both acrylic and oil on a painting. “My influence for my art started back when I was young, growing up in Twentynine Palms next to Joshua Tree National Park. The simple beauty and amazing colors inspired me to be an artist.”

www.naomibrownart.com

Pink Clouds, Joshua Tree, Oil, 24x20

Hannah Campbell | Yucca Valley, California

Hannah Campbell is a traveler and explorer who seeks to find the beauty in unusual places. Growing up in the Morongo Basin next to Joshua Tree National Park taught her to see the art of the desert in all its seasons, from the sun-drenched cholla and dusky purple hills of August, to the pale shades of sand and the bright blue March sky. Campbell has traveled all around the world as a school teacher and has been able to observe many different art styles, from Singaporean to Tanzanian. She loves weaving art into all the subjects she teaches, particularly math (“since math is the language of both visual arts and music”). She has participated in the JTNP Art Exposition twice, has had two gallery showings, and participated in her first successful Hwy 62 Art Tours in October 2019. She is a member of the Morongo Basin Cultural Arts Council. www.etsy.com/shop/HannahGraceArtStudio

Light in the Storm, Ink and Pencils, 18x24



Janis Commentz | Yucca Valley, California

Janis Commentz, known for her color-intense palette and loose brush strokes, teaches art classes and workshops in the Mojave Desert. She has a B.A. from University of Redlands and M.Ed. from California State University, San Bernardino. Although Commentz grew up near the coast, she believes desert beauty is an acquired taste. She began drawing and painting early in life as the daughter of an artist. In 1977, she moved to the desert to teach high school. She has exhibited at Gallery 62, Joshua Tree Art Gallery, Purple Agave, Rainbow Stew, T.E. Studios in Riverside, and Redlands Art Association, and has been a featured artist at the Glass Outhouse Art Gallery in Wonder Valley and 29 Palms Art Gallery. She has participated in the Hwy 62 Open Studio Art Tours for many years, as well as the Joshua Tree National Park Art Exposition, Joshua Tree National Park Spring Art Festival, Art Faire at CSUSB, and Art For Heaven’s Sake in Redlands. She served as the Director of Gallery 62 in Joshua Tree in 2016, and she currently teaches art classes at 29 Palms Art Gallery and field classes for the Joshua Tree National Park Desert Institute. www.janiscommentz.com

My Favorite Joshua Tree, Acrylic, 14x11

Juried Artists 2020



Real Mojave Fire, Photograph on Metal, 20x30

Luciano Demasi | San Diego, California

Luciano Demasi's photo activity is focused on "capturing the uniqueness of each moment nature provides with its immense and stunning endless beauty." He has photographed San Diego East County (including Anza-Borrego Desert) and U.S. national parks. His artistic love is for infrared photography: "The invisible world is first imagined, then captured, and finally brought to life, to unleash creativity, passion, and emotions. The invisible world is part of our reality and infrared photography is what unveils true beauty by enhancing our perception." He is the Grand Prize winner of the 1st Place Photo Essay (title: "Imagining and Then Making Paradise Visible: Wonders from Utah and the Role of Chaos") of the 2019 Kolari Visions Life in Another Light Photo Contest. Demasi is Associate Fellow of the American Institute of Aeronautics and Astronautics and professor of Aerospace Engineering at SDSU and is author of more than 100 publications. www.lucianodemasiphoto.com

Mollie Doctrow | Camarillo, California

Slogging through swamps, wading through weeds, and getting off the beaten path, Mollie Doctrow sketches native habitats and makes environmental woodcuts. These woodcuts are portraits of plants and plant communities; some endemic, rare, and endangered. Dedicated to promoting environmental conservation, Doctrow created the Wildflower Wayside Shrine Trail. Her work has been featured in many solo and group exhibitions, and she has held art residencies at Mojave National Preserve, Petrified Forest National Park, Big Cypress National Preserve, Everglades National Park, and Archbold Biological Station. These residencies provided access to remote and pristine areas, inspiring much of her recent work. Moving back to California two years ago, Doctrow has been re-discovering her home state and native California habitats. Several trips to Joshua Tree National Park rekindled a love for the desert. Her studio is located at Studio Channel Islands, Camarillo, where she teaches workshops and participates in community art programs. <http://doctrow.com>



Hedgehog Cactus, Woodcut, 9x12



Doug Dolde | Yucca Valley, California

Doug Dolde has been photographing the landscape of the American West since 2001. Originally using 4x5 transparency film with a view camera, he currently uses a high resolution digital camera. A total workflow from capturing the image, editing the file, and framing the finished print is what he considers to be essential in producing a fine art piece of the highest quality possible. "I consider myself primarily to be an observer rather than a creator. The creation is already present. It just needs to be captured at its best and brought to light." Dolde's work has been exhibited and sold at Desert Art Center in Palm Springs, Borrego Art Institute in Borrego Springs, JTAG in Joshua Tree, and the 29 Palms Art Gallery. www.douglasdolde.com

Joshua Trees in Fog, Photograph, 24x32

Juried Artists 2020



Cholla Garden, Oil on Panel, 14x18

Lee Edwards | Duarte, California

Lee Edwards, a resident of Duarte, California, has established a reputation as a plein air impressionist artist. His paintings are regularly exhibited in gallery shows on the west coast and are in private collections throughout the United States. He began his professional life as a documentary film and video editor for 30 years but then turned to the traditional art mediums of drawing and painting working primarily in plein air landscape. He paints weekly with a group of outdoor painters in the San Gabriel valley and often paints in desert areas as well as coastal areas near Laguna and Palos Verdes. His paintings have been exhibited in juried shows at the Huntington Library and Museum Botanical Center, the Oil Painters of America National Exhibition and the OPA Western Regional Exhibition, the Long Beach Art Museum, and the California Art Club.
<http://edwardsfineart.com>

Marilyn Froggatt | Palm Desert, California

Marilyn Froggatt is a plein air artist in the California Impressionist Tradition. She uses oil as her medium and creates landscape paintings both outdoors and in her studio. She participates in several art shows in the Coachella Valley and Southern California throughout the year and was a juried artist in the 2019 Joshua Tree National Park Art Exposition juried exhibition. Her work has been recognized by the *Riverside Press-Enterprise*, *Coachella Valley Independent*, and the *Redlands Daily Facts* with feature articles. She also does demonstrations for art organizations and lectures on California Plein Air History. She has served for over three years on the Board of Desert Art Center in Palm Springs. Prior to becoming a full-time artist, Froggatt was Vice President of a marketing company headquartered in Orange County, CA. She has been a landscape photographer since she was 25. She holds a degree in Education from Long Beach State University. www.marilynfroggatt.com



Hidden Valley, Joshua Tree II, Oil, 16x20



Whitney Gardner | Twentynine Palms, California

Whitney Gardner is an oil painter and printmaker, native to Southern California. With a focus on painting landscapes about the Southwest, she seeks to expand the barriers of western art to the California deserts that she knows so well. Residing in the Mojave Desert of 29 Palms for the last decade, a fascination with the rugged scenery has led her into an artful study of this region. From plein air to studio rendered compositions, her paintings are an ode to the remarkable facets of the desert. Though Gardner studied art in San Francisco and Oakland and attained a BFA in 2010 from California College of the Arts, she considers herself a self-taught artist. Her work has been published in the nationally circulated magazine *Western Art Collector*. In 2019, her painting, "Ocotillo Sky," received the Best of Show award at the Joshua Tree National Park Art Exposition.
<http://whitofthewest.com>

Big Senna Blues, Oil, 30x30

Juried Artists 2020



Family Foursome, Oil, 12x16

Tom Gillett | Redlands, California

Born in Southern California, and after a career in the U.S. Forest Service, Tom Gillett's creative side and interest in painting was piqued by a close friendship with a popular plein air painter in San Diego. He began to seriously pursue his art career in 2010, attending a variety of workshops and studying under nationally acclaimed plein air, figurative and portrait artists. Many of his paintings involve the desert and the California coast—places with a special connection for him. His goal is producing paintings that tell a story, where the viewer can put themselves in the scene, or evoke a memory. He's equally inspired by the human form, and how it is beautiful and challenging to capture. Gillett is a gallery member of the Desert Art Center in Palm Springs. His work has been juried into and awarded in a variety of shows. www.TomandLindaArt.com

Warner V. Graves III | Cathedral City, California

Artist Warner V. Graves spent 20 years as a commercial artist working as illustrator and interior artist/muralist and started painting landscapes in 2015. "With my oils I seek to bridge traditional desert landscape painting with explorations in contemporary art. As both an artist and an avid desert explorer I often wonder how to create work that builds on the rich traditions of desert landscapes but brings in a personal aesthetic. My early attempts played with photo realism, but I have since enjoyed working in a looser more gestural style. I am able to introduce elements of abstraction, not only depicting the landscape but also playing with the various forms of energy I find at specific locations—light, wind, sun, the repetition in patterns, all come into play. All my various backgrounds in the arts inform my work."

<http://warnergraves.net>



Late Afternoon, Oil on Board, 11x14



Monica Griffin | Marina Del Rey, California

Monica Griffin is a visual artist from Baltimore, Maryland. From an early age she began using a variety of mediums such as drawing and pottery as a means of expression. She later went on to study both fine art and visual communication design at university. It was here she found a deep love for painting and print making. These classes set the trajectory for a surrealist and graphical style built around portraiture and landscape. Her pieces attempt to embody our synergy with nature, and her recent month-long excursion out to Joshua Tree to paint has been equal parts awe-inspiring, an exploration of new mediums and techniques, as well as complimentary to her colorful style. Her work has been shown in cities nationwide including Los Angeles, New York, New Orleans, and Las Vegas. She is currently living and working in Venice, CA. <http://monica-griffin.com/paintings>

Joshua Tree at Dusk, Mixed Media, Acrylic and Gold Leaf, 40x30

Juried Artists 2020



Joshua Tree Sunset, Photograph, 16x20

Mark Hannah | Joshua Tree, California

Mark Hannah works with both traditional analogue and digital infrared photo processes. He utilizes false color films, black and white films, infrared films, vintage cameras and an infrared converted digital camera to record and capture light in ways that invoke a dreamlike quality in landscape scenes. He is a self-taught photographer with no formal art education who draws inspiration from landscape painting. In particular, he is inspired by the painterly styles of impressionism and post-impressionism. The California deserts provide a special kind of opportunity to explore this style of landscape photography, including not just the beautiful desert preserves but the history and artifacts of our settlement and use of the area. Hannah was originally based in the San Francisco Bay area and was a frequent visitor to Joshua Tree National Park. Recently he relocated to Joshua Tree full time to explore the open spaces and the particular light of the California deserts. <https://www.markhannahphoto.com>

Larry Hemmerich | Palm Springs, California

Artist Larry Hemmerich's work reflect his down-to-earth Midwest upbringing combined with the Western spirit of adventure and freedom found in California where he has lived for 20 years. "I am passionate about capturing the beauty of nature with my pastels. My art is the result of extensive hiking in the desert and mountains surrounding my Palm Springs home. I work from photography and in plein air." Hemmerich is an Associate member of California Art Club, member of Palm Springs Artists Council, and in 2019 was juried into the Pastel Society of the Southwest and Pastel Society of America. His art has been displayed at Backstreet Art District in Palm Springs, D Gallery on El Paseo in Palm Desert, Joshua Tree National Park Art Expo 2018 and 2019, Southwest Art Festival, Circle of Art in Borrego Springs, and San Dimas Festival of Art, among others. <http://larryhemmerich.com>



Twilight in Joshua Tree, Soft Pastels, 14x24



3D-Joshua Tree No.3, Cyanotype Quilt on Cotton Fabric Toned, 19x23

Christine Huhn | San Francisco, California

Christine Huhn is a visual artist and cultural heritage professional who grew up in northeastern Pennsylvania, less than five miles from the Delaware Water Gap National Recreation Area. This connection to the landscape has deeply influenced her work, which focuses on preserving cultural landscapes through film photography and historic photographic processes. She received her bachelor of fine arts in photography from the State University of New York at New Paltz and her master of arts in historic preservation from Savannah College of Art and Design. Her work has been included in solo and group exhibitions nationally. She has been awarded artist residencies at Dorland Mountain Arts Colony, Mojave National Preserve Artists Foundation, and Kala Art Institute. Christine currently lives in San Francisco, CA. <http://www.christinehuhn.com>

Juried Artists 2020



Dennis Johnson | Palm Springs, California

Dennis Johnson has shown work in more than 50 solo and group exhibitions, has conducted solar and traditional printmaking demonstrations from Montana to Annenberg Retreat at Sunnylands in Palm Desert and Palm Springs Art Museum, and has taught at California State University San Bernardino, Palm Desert. “My work extends naturally from the road I travel, exploring landscapes both rural and urban. Focusing on the American Iconic, I depict abandoned structures, forgotten signs, and distant memories with a contemporary approach toward color, composition, and abstraction. I isolate the subject matter, presenting the familiar in way that encourages a second glance from a new perspective. In my work, I strive to merge historical and emotional context with current reality, using acrylic, printmaking, collage, and digital techniques, to blend the past, present, and imagined. My work focuses on places lost to time. These places remind us of our history, often overlooked, but still visible if you step outside the ceaseless stream of progress.”

<http://www.dennisjohnsondesign.com>

Desert Series: Celebration, Solar Plate Etching, Chine Collé Transfer, and Hand Coloring, 22x15



Kay Kaplan | San Diego, California

Kay Kaplan is always painting, completing her last inspiration then reaching inward for more enlightenment, understanding, and rushes of creativity all inspired by beautiful San Diego and California’s surrounding deserts. Kaplan’s art education, including private classes, workshops, extensive boot camps through the Athenaeum School of Arts in La Jolla, CA, has given her a strong knowledge of oil paints and has encouraged her to see things differently. She loves holding on to the flow and focus that she has come to, in a place of calm, exhilaration and excitement while portraying all the wonder and beauty that Southern California and its deserts have to offer. Kaplan paints daily from her home studio based in San Diego.

<https://www.kaykaplan.com>



Desert Magic, Oil on Canvas, 48x24



Joshua Tree’s Crown Jewels, Painterly Photograph, 16x20

De Karlan | La Quinta, California

De Karlan is a nature and architectural photographer with publications in *Architectural Digest*, *HOME Magazine*, *Garden Design* magazine, *NY Times*, *Los Angeles Times Magazine*, and more. In addition, her botanical and nature images have been featured in numerous calendars, greeting cards, and fine art gallery shows, both nationally and internationally. Karlan uses medium and large format technical field cameras, along with 35 mm cameras for her nature photography to create painterly fine art images. A member of Professional Photographers of America and Women in Photography International, she explores the canyons, foothills, waterfalls, and valleys of our low and high desert regions—and is a participating artist with Desert Art Center in Palm Springs and Borrego Art Institute in Borrego, California. “Painterly photography is a style I’ve developed over the years, aimed at capturing nature images reminiscent of plein air paintings.”

dekarlenphoto@yahoo.com

Juried Artists 2020



3D – 29 Palms Founders, Ceramic and Wood Bas Relief, 16-3/4x20-1/2x1-1/2

Ed Keesling | Yucca Valley, California

In the spring of 2011, Ed Keesling moved into his new desert studio, a 900-square-foot work space, to throw pots on the wheel, create ceramic tile, murals, and sculpture. “Most of my work is high fired to cone 10 (2345 degrees F), in a propane gas kiln, to achieve the optimum marriage of clay and glaze. I also make coil sculpture and pottery using the ‘Wedged Coil’ process which was the subject of my Master of Arts thesis at the Antioch University Visual Arts Center in Columbia, Maryland, 1977.” Since the 1990s Keesling has studied and worked with Native American forms, images, and pit-firing methods, and has taught wheel throwing, hand building, and pit-firing methods to youth and adults. Keesling’s work is sold in stores and galleries in 29 Palms, Joshua Tree, and Yucca Valley, as well as the Joshua Tree National Park visitor center gift shops.
www.edsclyayworks.org

Angel LaCanfora | Torrance, California

Self-taught mosaic artist and Southern California native Angel La Canfora has been making mosaics since 2007. Since 2016, she has used stained-glass exclusively in her mosaics. Her mosaics have been featured in galleries and museums around the country. She most recently had two month-long, solo exhibitions at the Lost City Museum outside Las Vegas and had an artwork featured in the 2018 Joshua Tree National Park Art Expo juried exhibition. She markets her mosaics through Etsy. Diagnosed with a rare, debilitating and untreatable genetic disorder called Ehlers-Danlos Syndrome, she finds healing qualities in mosaics and considers making them a form of therapy—a way of turning her focus away from pain and into beauty. She also is a musician, published poet, and landscape photographer.

www.etsy.com/shop/MosaicsByLaCanfora



3D – Sunset Explosion, Stained Glass Mosaic, 25x34



Bert Mattingly | Anchorage, Alaska

Bert Mattingly is an Alaskan-based, Californian-born, award-winning fine art landscape photographer. He is self-taught, pursuing his professional pursuit for over 30 years, and he identifies Pablo Picasso as a major influence in developing his vision. Lighting is the critical element in all of his images, all other components are in response to and in alignment with the lighting.

<http://bertmattingly.net>

Moonscape, Photograph, 20x30

Juried Artists 2020



Cholla Garden 2020, Photograph, 36x48

Dean Mayo | Indio, California

Dean Mayo began his career as a photographer by combining two passions, Golf and Photography. By blending the two, he started Foretopography, which specialized in golf course photography. It was a natural transition since his early career as a PGA Golf Professional trained his eye to observe students swings to help them improve and to visualize the shots he wanted to hit. "As my love for photography grew I ventured out to capture the amazing landscapes in my immediate area and discovered and fell in love with Joshua Tree National Park. Today I would guess that landscape photography accounts for 90% of the images I take." For the past 15 years, Mayo has participated in art shows throughout the country and has his work in national stores, magazines, books, as well as many businesses and public buildings. www.foretopography.com

Marilyn McFarlin | Joshua Tree, California

When Marilyn McFarlin was young, she had her fortune read by a seaside fortune teller "for kicks." As the fortune teller peered down at the lines on Marilyn's palm, she told her she would have to wait 30 years to find her passion. Almost 30 years to the day, her husband got her a camera for Christmas. Since then, she has not looked back, and remembers that prophecy with a chuckle. "Shooting nature, for me, is akin to a spiritual experience. I particularly love starry skies—the silence, the expanse, the feeling of being one with the universe. All of nature speaks to me—desert landscapes, stunning sunrises and sunsets, desert critters and birds, hummingbirds and owls especially, and beautiful cactus flowers. I've found myself truly blessed, living so close to Joshua Tree National Park. The park gives me countless opportunities to indulge and is a never ending source of inspiration."

<http://marilyn-mcfarlin@pixels.com>



Afterglow, Photograph, 30x20



Color Fuel, Photograph, 24x36

Mitch Miller | Joshua Tree, California

Mitch Miller returned to California in 1979 from North Carolina and rediscovered the mountains, the deserts, then first visited Joshua Tree National Monument on Memorial Day 1980. A year later, a friend lent him his 35mm SLR camera. "I've hiked over 100 Sierra peaks, over 60 desert peaks, and have backpacked in the Sierra Nevada for a week, 13 times. I've had a camera with me each time... In 2005 I converted from film to digital and have never looked back. I'm a 20-year Photoshop user, and I usually use it to make images look like I remember them, or want to remember them; adjusting brightness, contrast and color to taste. In some cases, I seek to create a dreamscape. My photography is not always journalistic, and is hopefully artistic.... The best photography is often about a moment, and often the moment is created by striking light." www.FineEarthPhotography.com

Juried Artists 2020



Robert Miramontes | Desert Hot Springs, California

Robert Miramontes was born and raised in Southern California, and has spent nearly his entire life exploring, rock climbing, and photographing Joshua Tree National Park. He has written 7 books on the Park. His extensive collection of Joshua Tree National Park photography spans nearly 30 years, chronicling a near fanatical obsession with the place. Miramontes' award-winning photography can be seen in books, magazines, exhibitions, and fine art prints distributed world-wide. rtmiramontes@gmail.com

Primrose and Dune, Photograph, 20x30



Snow Day in Jumbo Rocks, Photograph, 20x48

Chip Morton | Menifee, California

Even as a kid Chip Morton wanted to create images with a camera. His parents forbid him to touch one for fear he would destroy it. Wading into the ocean to document his brother David surfing with a forbidden Instamatic camera was the first time he touched a shutter release. From that point on, he was hooked. Soon after, he registered for his first photography classes. After school he worked in camera stores, and in the late '80s he worked in some of Orange County's largest commercial photography studios before opening his own studio. After 20 years of product photography, Morton is focusing on fine art landscape photography. He is a master of articulating light and surface, and has a unique talent for seeing dynamic compositions. "Today, I dedicate this work to the survival of one of Earth's unique life forms: The Joshua trees of Southern California. The ancient ones." www.joshuatree.photo



Angel R. Pietsch | Bismarck, Arkansas

Angel R. Pietsch has been captivated by nature, and architecture, so her work embodies the beauty of the experiences she has while roaming the continent with her husband. Discovering hand colored postcards on a trip to Yosemite sparked her interest in tinted photos, which date back to the 1880s. "I am interested in hands-on processes and painting, which is what attracted me to tinting black and white photography. After much research and trial and error I have developed a process that works, and although I have had to adopt modern techniques for this time honored tradition, my hope and goal is that I have preserved this art form while giving it a modern twist. All works of art are created from my digital photography and produced in two ways: either on paper where I tint the image with Marshall's photo oils or on canvas where I use oil paints and a PM solution to tint the image." www.flyingpeachdesigns.com

Dos Floraciones, B/W Photograph Tinted with Oils, 20x16

Juried Artists 2020



Focused, Photograph on Metal, 24x36

Kevin Powell | Joshua Tree, California

The natural world has been the object of Kevin Powell's artistic desires since he first picked up a camera 32 years ago and began creating images focused on simple, clean compositions that depict the natural world just as it is—natural and raw. He has visited Joshua Tree National Park for 47 years and been a full-time resident for 26 years. During this time the Park has been an alluring, creative environment in which to photograph the natural world. "From the classic early morning sunrise, to the fleeting glimpse of the elusive bighorn sheep, to the spring carpet of colorful wildflowers, to the granitic oddity of the jumbled masses of rock, the Park constantly invites my presence." Photos representative of his work can be found in his first book, *40 Classic Day Hikes of Joshua Tree National Park*. www.powellimages.com

Mark Robben | Rancho Palos Verdes, California

Mark Robben is a 23-year resident of Southern California, by way of southwestern Ohio where he first began his lifelong love of outdoor photography. From Pacific Ocean vistas to the wide open desert, Robben tries to capture the beauty of solitude in his landscape images. In recent years he has focused on capturing the beautiful night skies over Joshua Tree National Park, featuring many of the less traditional areas and rock formations as his foreground subjects. In addition to digital photography, he has rediscovered his love for film photography and recently began introducing various formats back into his workflow. When not wandering the park in search of his next composition, he works as a Visual Effects Artist in feature films, commercials, episodic television, and the occasional music video for various post-production facilities in the Los Angeles area. www.skylightphoto.net



Night Light, Photograph, 13x19



Jenny Slaver Robbins | Joshua Tree, California

Jenny Slaver Robbins is an award winning artist, illustrator, and educator that combines her love of nature with a passion for painting. She was born in the north Texas plains and grew up riding horses. This was an early inspiration for her art, as she has been drawing equines ever since she could hold a crayon. After receiving a full tuition scholarship, she earned a Bachelor of Fine Arts degree from Memphis College of Art and graduated with honors. Robbins has a reverence for nature and a love of the outdoors that inspires her art. She is known for her vibrant works in oil and acrylic depicting horses, wildlife, and large scale botanical paintings that are colorfully playful. She currently resides in the Mojave Desert town of Joshua Tree, California, and continues to fill her time with horses, painting and traveling with her dog, Scout. <http://jennymakesart.com>

Jackrabbit, Oil on Canvas, 48x36

Juried Artists 2020



Mecca Robinson | Gardena, California

Mecca Robinson is a female artist of color who currently resides in Los Angeles. She primarily creates traditional artwork with the preferred medium of acrylic paint. The goal of her artwork is to inspire individuals and demonstrate the growth and progress in her trade. She enjoys creating artwork that touches upon a variety of subjects: artists of color, common objects we see in everyday life, and landscapes. It wasn't until late 2017, she picked traditional painting back up with a combination of discovering oil painting. A few oil paintings later, she decided to give acrylics another chance and has grown a more established connection with it from 2018 up until the present. She's taken the opportunities of taking college-level art courses, attending workshops, and self-educating in order to improve her craft. The results of her skills have been featured in exhibitions, community events, and projects throughout her city.

suplexxart@gmail.com

Rocky Hike, Acrylic, 48x36

Tami Roleff | Yucca Valley, California

Tami Roleff grew up in Minnesota, went to college in Iowa, and married the boy next door. The Marine Corps sent them all over the world until they landed in Yucca Valley, where they've lived since 2004. Her travels have influenced her taste in art, and her home has an eclectic mixture of Asian and Southern California art. Roleff's passion is photographing animals, followed by recording the historical artifacts and ruins that show us who we were and how we lived. Her best-selling images are of Joshua trees, the unique symbol of the Mojave Desert. She has taken classes and workshops with nationally known photographers, and her photos have received multiple awards. She was juried into Open Desert: Music and Photographic Arts Showcase at Annenberg Theater in Palm Springs, 2016, and Joshua Tree NP Art Expo in 2013, 2016, and 2019. Her photos are in private collections around the country and abroad. tamiroleff@verizon.net

New Year's Eve by Moonlight, Photograph, 16x20



Just Out of Reach, Oil on Board, 18x24

Greg Ross | Joshua Tree, California

Gregg Ross' artwork ranges from paintings to mixed media assemblages. He completed undergraduate studies at UCLA and UCSB's College of Creative Studies, with graduate courses through UC Berkeley. In his paintings, he utilizes the traditional technique of layering and glazing, blending and gradating oils with various sizes and textures of brushes. "The submitted pieces include images of my hand, since I prefer to work directly from a model (and my hand is always ready to pose). This element makes each a self-portrait of sorts, in order to convey my thoughts and feelings inspired by Joshua Tree National Park. 'Just Out Of Reach' is inspired by my awe of Cap Rock. It looks like you could almost remove or tip it, not that I'd want to. It's perfectly balanced by nature, with its seemingly precarious perch. My hand is intended to place me in the landscape, interacting with the beautiful and relatively out-of-scale rock feature."

www.art.gregg-ross.com

Juried Artists 2020



3D – *Hopeful*, Engraved Lighted Mirror, 15-1/2 x 22 x 3

Georgia Ryan | Mohave Valley, Arizona

Artist Georgia Ryan finds inspiration in almost everything: nature, a conversation, a dream last night. She is excited by exploring many different mediums: glass, clay, mirror, wire, paper, all present intriguing challenges. The creative process has fascinated her since childhood, and she finds satisfaction not only in the final art piece, but also in the methods, techniques, and materials used to create it. Born in San Francisco, raised in Sacramento, she practiced dental hygiene in California and Arizona. She and her husband, Jim, owned and operated a signs and graphics business for 20 years. She is largely self-taught with books, DVDs, the internet, and shamelessly picking the brains of artists she meets at shows and anywhere else. Her work has won numerous awards, and is in private collections in Arizona, California, Kansas, Nevada, New Jersey, New York, North Carolina, Canada and Europe. www.woodgatestudio.com

Shiela Sasek | Pahrump, Nevada

Shiela Sasek is a sculptor and painter who resides near the edge of Death Valley. Her passion for art began at a young age and was influenced by the scenic outdoors of New Mexico. While working on her degree in horticulture in Missouri, she took classes in ceramics and sculpture, where she was encouraged to apply to the Kansas City Art Institute in Missouri. She was awarded a departmental scholarship in sculpture at the Kansas City Art Institute. Sasek advocates for ecological preservation through her art work. Her goal is to show the value and diversity of our desert public lands. Her work captures the desert and its plant and animal life. Her vistas of night skies with artificial light pollution and smoke silhouetting iconic cacti are particularly mesmerizing. Sasek is currently a member of the Twentynine Palms Artists' Guild and Art Gallery in Twentynine Palms, CA. shieladore@yahoo.com



2D – *Summer Milky Way*, Oil on Canvas, 24x18



3D – *Mojave Raven*, Clay and Oil Paint, 10x6-1/2x3-1/2

Juried Artists 2020



Forces of Nature, Oil on Canvas, 18x24

Debra Saude | Joshua Tree, California

Debra Saude had taken watercolor painting classes in Tucson, AZ, in the early 1990s and had not painted for nearly 17 years when she found Artists of the High Desert, located in Hesperia, California, and began painting with watercolors again. After other art classes in drawing, pastels, acrylics, and oils, she found oil painting was her favorite medium. “I particularly like to paint desert landscapes, and since I have lived most of my life in deserts, I know that the desert has a special kind of beauty, and I like to capture that.” Saude has received awards at the San Bernardino County Fair, Fine Arts exhibit, and at the Associated Artists of the Inland Empire yearly competition. She was president of Artists of the High Desert in 2017-2018 and now serves on the board. She has instructed a variety of weekly youth art classes, and in 2019 started her own business, Art Inspired. <http://sundance473.wixsite.com/artinspired>

Laurie Schafer | Yucca Valley, California

Laurie Schafer lives in the high desert between Joshua Tree and Yucca Valley, California; a sharp contrast to her birthplace in Minnesota. Born in 1955, at the height of Mid-Century Modern, her parents encouraged her innate artistic abilities from the start. Initially studying the Fine Arts, she eventually received her degree in Clothing Design. This evolved into her creating Artwear, which she considers a deliberate collision of art and fashion. Laurie Schafer’s Artwear has received numerous awards and has been published by distinctive books and magazines and is found in museums, galleries and private collections. Her focus has evolved from Artwear to Textile Art, literally painting with fabric. The move to the desert has influenced further evolutions in her art, re-igniting her love of Mid-Century Modern, developing an appreciation of the vistas of the desert and the dangerous beauty of the universe. Her work in fiber is often informed by the ideal of “woman’s work” until a disconcerting beauty emerges. [facebook.com/LaurieSchaferDesigns](https://www.facebook.com/LaurieSchaferDesigns)



3D – *Desert Spiral*, 20” diameter, Handmade needle felt of wool, silk and mixed fibers, attached with embroidery floss to “found” rusted rebar circle



Hidden Valley in JTNP 2020, Photograph, 30x38

Jim Smart | Joshua Tree, California

Jim Smart developed an interest in photography when he was 16, and learned digital cameras when he became the advisor to the CSUSB *Coyote Chronicle*, the school newspaper at California State University, San Bernardino. He is now retired. He captures fine art images in Joshua Tree National Park using 35-mm film and medium format cameras. He develops, scans and prints all of his own work. Since he lives a few miles from the West entrance, he gets into the Park mornings or evenings each week to take photos. Smart has had about half a dozen shows in Santa Ana, Hollywood, and 29 Palms. He was an Artist in Residence in Mojave National Preserve, and has taught classes for the Desert Institute at Joshua Tree National Park. smajim@gmail.com

Juried Artists 2020



Yucca Shidigeraon Gneiss, Charcoal on Paper, 20x26

Mark Spangenberg | Twentynine Palms, California

Artist Mark Spangenberg was born and raised in 29 Palms in the Mojave Desert and was influenced by his family history, trips to the library and rare trips to the L. A. County Museum of Art, and European Museums where he gleaned the beauty of art. Known as a contemporary realist, he received formal education at Art Center College of Design in 1985 with a BA in Illustration. During that time, he worked at the Getty Museum in Malibu, conserving and cleaning Greek terra cotta figures as old as 2000 B.C. In 1980, he enrolled in a fresco painting class in Salzburg, Austria, taught by master fresco painter Robert Scherer from Bolzano, Italy, and was introduced to painting into fresh plaster (true fresco). He has worked as a billboard painter, TV courtroom sketch artist, art instructor, fresco painter with Benjamin Long IV and Charles Kapsner; and in traditional arts doing portrait, mural, historical, and landscape commissions. www.markspangenbergfineart.com

Mark Spicak | Twentynine Palms, California

Artist Mark Spicak began painting with oils in 1970. A self-taught artist, he has created over 1,000 works and has painted the California Desert from 1991-2020. "My goal is to engender the spirit of past landscape artists who found beauty, inspiration, and meaning in Nature which surrounded them. It is our good fortune to have inherited their work, much of which portrays sites now unrecognizable. I have painted locations in the California Desert where wildflowers colored the dunes in spring; now within a few short years, many are covered with ubiquitous and monotonous lawns and structures. Assuming the human aesthetic spirit will live on in subsequent generations, perhaps my work, and that of artists past and present, with similar inspiration, will inform of what was here, at least visually. But the exhilarating perfume of a spring day among flower-strewn desert dunes with unscarred, uncluttered mountain horizons may soon no longer be." marcusareliuuus@gmail.com



Sundown on a Slant, Oil on Canvas, 24x36



Cosmic Desert Sky, Oil on Wood, 16x20

Emily Suárez | Pasadena, California

Emily Suárez is a landscape and nature oil painter working out of her home studio in Pasadena, CA. Having grown up in Virginia, she is in awe of the beauty of the southwestern desert landscape and its many unique and exotic plants. Painting is a means of meditation and healing for her, and she gains a sense of peace and connectedness to the natural world through her creative process. Suárez has recently shown her paintings in numerous juried shows throughout the state of California, including at TAG Gallery, Palos Verdes Art Center, Danville Village Theatre Art Gallery, and Chico Art Center. Her painting "Desert Magic Hour" was shown in the 2019 Joshua Tree National Park Art Exposition. She is a member of the Pasadena Society of Artists and Monrovia Association of Fine Arts. She has a BA from the College of William & Mary and an MA from New York University. www.emilysunez.com

Juried Artists 2020



Alexandra Dawn Taggart | Albuquerque, New Mexico

Alexandra Dawn Taggart is recognizable for her paintings of the American West—landscapes that, like a montage, are pieced together from multiple vantage points of a single place or places. Born and raised in New York City, Taggart was later drawn to the collage-like quality of the American Southwest landscape. Often observing this sort of juxtaposition with deep fascination, Taggart has thus sought to make them prominent in her paintings. Human figures are also a focal point. These modern-day figures are hikers, climbers, or explorers who relate to and engage intimately with the landscape. From the viewer's vantage point, they're embarking on a journey whose destination is open. Before she started painting full-time, Taggart spent nearly a decade designing handbags in New York City's fashion industry. She was also an adjunct instructor of Accessories Design at the Fashion Institute of Technology in New York City.
www.alexandratagg.art

Along the Wash, Finding Sun, Oil on Canvas, 16x12

Arthur Tonelli | Yorba Linda, California

Arthur Tonelli has been doing photography for 6 years. After dabbling in videography and video editing during college, he quickly took to landscape photography. A native of Southern California, he's spent ample time capturing the beauty of the state's national and state parks. In recent years, he's put an emphasis in astrophotography and chasing dark skies. He tries to bring a different perspective of the world through his camera's lens that the human eye can't achieve. Tonelli often spends hours to capture one image, taking a variety of photos at different exposures aiming to accurately portray the beauty of the night sky. "I love the vulnerability of astrophotography. The experience goes beyond taking a photograph. You realize that nature is still



Joshua Tree Milky Way Arch, Photograph, 24x48

quite alive at night and causes you to reflect on how small we are in the universe." www.arthurtonelli.me/photography



Vivian Torres | Chino, California

Southern California based artist Vivian Torres has been honing her skills of abstract painting for several years. She received her Bachelor of Fine Arts Degree from California State University, Long Beach, where she discovered her passion for color relationships. Her work is deeply informed by emotion, beauty, and femininity found in all aspects of life including nature, female bodies, and anthropomorphic objects. Ambiguity in expression and harmonious color palettes are some of the formal techniques she utilizes in order to convey these feelings. Although her process begins with observation, her paintings soon transcend space and present new struggles to react to whilst slowly drifting further away from a recognizable object. As a result, the viewer is left with an image that is open to interpretation, and ideally emitting an emotional response as well.
<http://viviantorresart.com>

Cholla Cactus Garden, Acrylic on Canvas, 24x24

Juried Artists 2020



Margie Trandem | Yucca Valley, California

Margie Trandem received her first camera at the age of 8 as a gift from her father, who always had a camera with him. She has taken photos all her life and has been told she has an “eye” or natural ability to compose. “After my father passed away eight years ago, I bought my first real good camera. I went on a 6-week road trip across the U.S. and my passion for photography was reignited. I have committed to traveling and seeing all the places that I dreamed of, and I am slowly checking off the bucket list. It is a way for me to feel closer to my father. I simply enjoy capturing moments in nature, wildlife and travel as the opportunities present themselves. I feel successful as a photographer and artist when an image I have taken connects with a person on an emotional level. When it inspires or reminds a person of something they care about.” Trandem’s collection of work includes travels to Africa, Norway, Antarctica, Alaska, and the desert southwest.

<https://marjoriemandem.smugmug.com>

Snowstorm, Photograph, 14x11

Marie Van Dorp-Skelly | Sunland, California

Classically trained as a fine artist, Marie Van Dorp-Skelly has been an Instructor for more than 20 years for Mission: Renaissance, Fine Art Classes. “I enjoy combining abstract and impressionistic painting styles, inspired by glowing light.” The Southern California artist graduated from Cal State Northridge in 1987 and continued her studies at the California Art Institute. She has exhibited in numerous venues such as the Palm Springs Art Museum; Yosemite National Park Museum; Arts for the National Parks in Jackson, Wyoming; and she was juried into the 2017 Joshua Tree National Park Art Exposition. She most recently exhibited in “Power and Voice” Women’s Art Exhibition at the Baldwin Park Museum, California. mariemelskell@gmail.com

Peaceful Light, Oil, 22x28



Nichole Vikdal | Yucca Valley, California

Nichole Vikdal has loved pottery all her life. From playing in the mud as a child to her first thrown pot, she was hooked. She has made Yucca Valley her home for the past 30 years and created pottery for just as long. The desert fuels her passion and defines her purpose: To attempt to capture a piece of nature and hold its allure and elegance in her work. Her passion is crystalline glazing, a process where she grows crystals on the porcelain she throws on her wheel. She has won several awards for her work and has shown in galleries throughout the Joshua Tree Gateway Communities and Inland Empire. She is currently represented in several locations including the Riverside Art Museum. Vikdal is a member of Associated Artists Inland Empire, Morongo Basin Cultural Arts Council, The Desert Arts Center, and Twentynine Palms Artists’ Guild. www.crystalsbynichole.com

3D – Hidden Wonders of the Park, Crystalline Glazed Porcelain Ceramics, 9-1/2 x 12-1/2 x 6



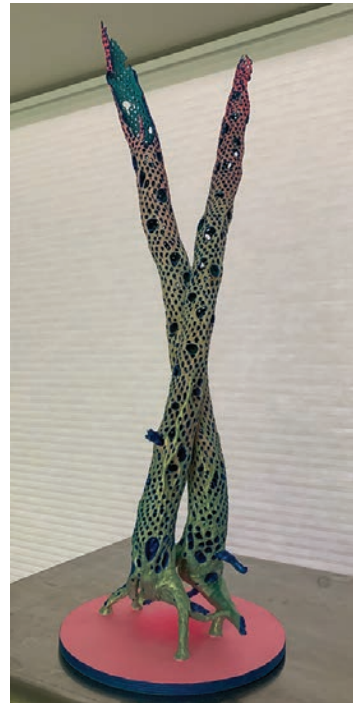
Juried Artists 2020

Ehrick Wright | Rancho Mirage, California

Ehrick Wright's love of nature and life-long fascination with light, shadow and flowing lines are evident in all his artwork, which includes paintings, drawings, and pastels. Most recently, his work has been inspired by the bizarre landscape of rocks, hills, and canyons found in Joshua Tree National Park. Faces, torsos, animals, and monsters—all appear in profusion, change with shifting light and shadows, and vary with the beholder. Wright's work attempts to capture these features as well as the bold contrasts and atmospheric clarity found uniquely in the desert. He works out of his home in Rancho Mirage, where he has lived since 2003. He attended Massachusetts College of Art, the School of the Museum of Fine Arts and the Decordova Museum School. He has participated in numerous shows since 1990, including South End Open Studios, Rancho Mirage Art Affaire, Rancho Mirage 2017 Art Tour, and the 2017 and 2019 Joshua Tree National Park Art Exposition juried exhibitions. <http://ehrickwrightart.com>



2D – *The Way Through*, Metallic Acrylic on Panel, 24x24



3D – *Dancing Cholla*, Metallic Acrylic on Cholla Husks, 14h x 3w



Geology Tour Road, Oil on Canvas, 24x36

Steven Wybenga | Morongo Valley, California

Steven Wybenga and his partner Clay left the congestion of the Bay Area and moved to open land and dark skies of Morongo Valley about 9 years ago. Inspired by the natural beauty of the desert, his paintings are a reaction to and an interpretation of this vast and beautiful but threatened landscape. His process involves using black and white photos of the desert, choosing his palette as part of his artistic vision to create drama, mood, and movement in color and form. “The magnificence of the desert cannot be overstated when experiencing its natural beauty. Artists have long documented the stunning desert, drawing attention and awareness to the public of this ever changing land. However, the desert remains at risk from human exploitation, fire, pollution, and climate change. The responsibility to advocate for the desert ecosystem rests in our hands.” st.wybenga@gmail.com

Juried Artists 2020



Sunset Moonrise, Photograph, 12x18

Gary Zuercher | San Clemente, California

Gary Zuercher is originally from Central Illinois and attended Bradley University from 1964 to 1967 studying sculpture, printmaking, and design. In 1961, he traveled to the deserts of the west and California for the first time and was fascinated by the colors and textures of the Sonoran Desert and the surfing culture of Southern California. "Photographing the American West challenges both mind and body. Sometimes there is a long wait, but usually one minute in the morning and one minute in the evening is when the light is best. Occasionally there is a shot next to a road, but a hike is often required. The winter storms in the American West bring wild skies that contrast with giant boulders and barren spaces. This is the desert I photograph, focusing on smaller subjects in an attempt to describe the whole desert environment." gary@cc.occxmail.com

JURORS 2020

We thank our jurors for the 2020 Joshua Tree National Park Art Expo juried exhibition, who worked remotely this year to select our juried artists and the artwork for the exhibition at 29 Palms Art Gallery (Nov. 1–29) and featured in this catalog. Due to Covid-19 guidelines, we could not meet in person for the jurying. Instead, the PowerPoint presentation was emailed as a PDF to the jurors along with scoring sheets. They had a week to peruse the artwork (blind jurying, no names), place their scores, then email the sheets to us. Project Coordinator Vickie Waite tallied the scores, did an Excel sort, and Voila! The top 61 scoring artists and artworks were selected. Our thanks to...

Jim Bagley, Photographer, JTNP Council for the Arts board member, longtime resident, former Mayor, and descendant of 29 Palms homesteaders.

Susan Greer, Mixed Media Artist, 30+ year desert resident of Morongo Basin, Assistant General Manager of Joshua Basin Water District.

Casey Kiernan, Photographer, Filmmaker, Owner of Joshua Tree Workshops leading workshops for photographers in Joshua Tree National Park.

Terry Lee Stone, Creative Strategist, Faculty member of Art Center College of Design in Pasadena, board member of Joshua Tree Retreat Center and president of their Whole Arts Auxiliary.

AWARD JUDGES 2020

Our thanks to the Award Judges who were invited to meet at 29 Palms Art Gallery on November 5 and determine the awards for this year's JTNP Art Expo juried exhibition in three categories: 2-Dimensional Art, 3-Dimensional Art, and Photography—First, Second, Third place in each category—plus Best of Show. In addition, an honorary Superintendent's Award is selected each year for one piece of art throughout the entire show by Joshua Tree NP Superintendent David Smith. For the category awards, JTNP Council for the Arts was pleased to once again offer up to \$5,000 in cash awards, as chosen by three Judges...

Casey Kiernan, Photographer, Filmmaker, owner of Joshua Tree Workshops, and currently producing a full-length feature documentary about Joshua Tree and the issue of protecting the endangered Joshua trees.

Brian Rennie, Art collector, retired graphic designer, commercial photographer, creative director, owner of Benchmark Studios, Joshua Tree (formerly Orange County), and past President of JTNP Council for the Arts.

Anna Stump, Artist and Arts Educator, MFA from San Diego State University, and recipient of international artist residencies including Ireland, France, Mexico, and Senior Fulbright Scholar to the Fine Arts Department at Anadolu University in Turkey.

QA

LAW OFFICES OF
QUINTANILLA & ASSOCIATES

proud sponsors of

ARTS
JOSHUA TREE NATIONAL PARK
COUNCIL FOR THE ARTS

ART EXPOSITION 2020

Steven B. Quintanilla
President

*"Art is the most creative expression
of American freedom."*

LAW OFFICES OF QUINTANILLA & ASSOCIATES
777 E. TAHQUITZ CANYON WAY, SUITE 200-41
PALM SPRINGS, CA 92262
760-969-6794 | www.QALAWYERS.com

Creativity begins here

ADS | BROCHURES | LOGOS
WEBSITE DESIGN & DEVELOPMENT
VIDEO PRODUCTION

LOCAL CLIENTS INCLUDE:
JOSHUA TREE NATIONAL PARK COUNCIL FOR THE ARTS www.JTNParts.org
CITY OF 29 PALMS TOURISM www.visit29.org
29 PALMS ART GALLERY www.29palmsartgallery.org
CALIFORNIA WELCOME CENTER YUCCA VALLEY www.californiawelcomecenter.com
MOJAVE WIFI www.MojaveWiFi.com

BENCHMARK
STUDIOS



PO BOX 980
64085 QUAIL SPRINGS RD
JOSHUA TREE, CA 92252

WWW.BENCHMARKSTUDIOS.COM

714.630.7965

ASK FOR
Lori Rennie

29 PALMS
ART
GALLERY

ARTISTS' GUILD
GALLERY
GIFT SHOP
ART CLASSES



PRESENTING THE BEST OF THE
HI-DESERT FOR OVER 65 YEARS

EXHIBITS & GIFT SHOP: Thursday - Sunday 11 am to 3 pm
74055 Cottonwood Dr. | Twentynine Palms, CA 92277
760.367.7819 | www.29palmsartgallery.com



PO Box 241, Twentynine Palms, CA 92277

**Proud supporter of
the community,
all its people
and activities**

Join us in celebrating
the art and artists
inspired by
Joshua Tree
National Park!

29 Palms Historical Society

The 2020 Twentynine Palms



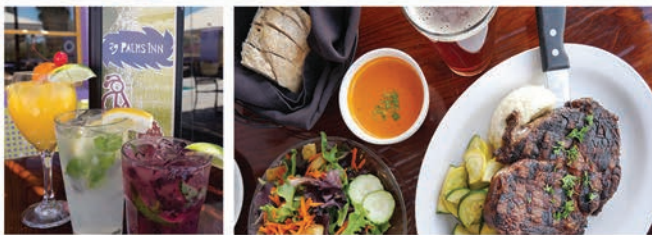
WEED SHOW

NOV. 7 & 8
Saturday
12-4 pm
Sunday
10 am-4 pm
Admission Free

Old Schoolhouse Museum & Gift Shop

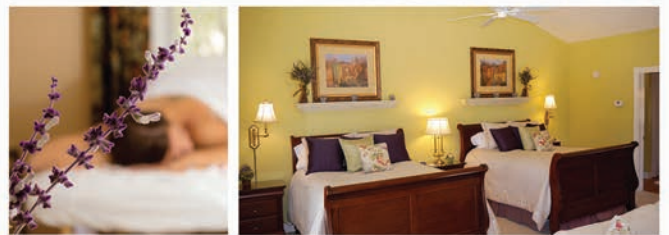
Open Wed.-Sun. 1 to 4 p.m.
6760 National Park Drive, 29 Palms, CA 92277
www.29palmshistorical.com

Historic Inns of Twentynine Palms Experience a moment in time



29 PALMS INN

73950 Inn Avenue, 29 Palms, CA 92277
29PalmsInn.com // 760.367.3505



CAMPBELL HOUSE

74744 Joe Davis Drive, 29 Palms, CA 92277
CampbellHouse29Palms.com // 760.367.3238

Celebrate. Art.

"A bit of advice, don't copy nature too closely. Art is an abstraction; as you dream amid nature, extrapolate art from it, and concentrate on what you will create as a result."

—PAUL GAUGIN



JTNPCA, POST OFFICE BOX 1755, TWENTYNINE PALMS, CA 92277
www.jtnparts.org